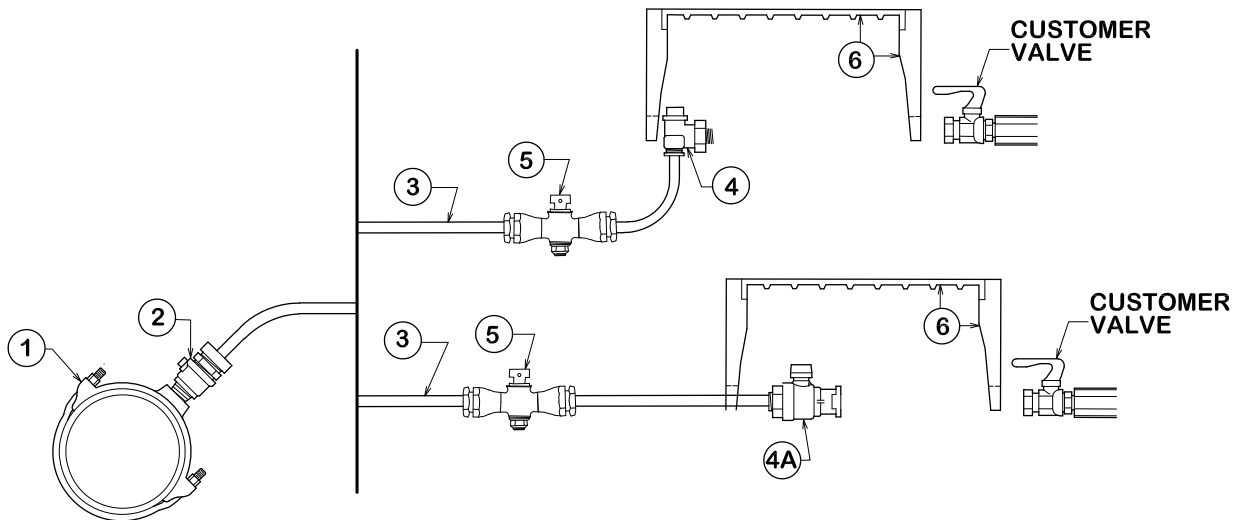


NOTES:

- ① Service saddle and CC threads installed per manufacturer's recommendations.
All main types: Ford S70/S90
- ② Corporation Stop: Ford FB 1000-7 (cc thread) - 2"
- ③ Service tubing: Type K copper - soft - 2"
- ④ Meter box valve:
4 = Ford Angle Stop - FV-43-777W - 2"
4A = Ford Straight Stop - B11-777W - 2"
- ⑤ Ball valve
- ⑥ Meter box and lid: Old Castle meter box, CI lid with Reader #65

PREFERRED METHOD



UPON CITY
ENGINEER'S APPROVAL



CITY OF BRYAN
The Good Life, Texas Style.

**CITY OF COLLEGE STATION
STRAIGHT OR ANGLE TAP 2"**

DATE

DEC 2020

**B/CS UNIFIED
STANDARD DETAIL**

DETAIL NO.

W7-03



CITY OF COLLEGE STATION