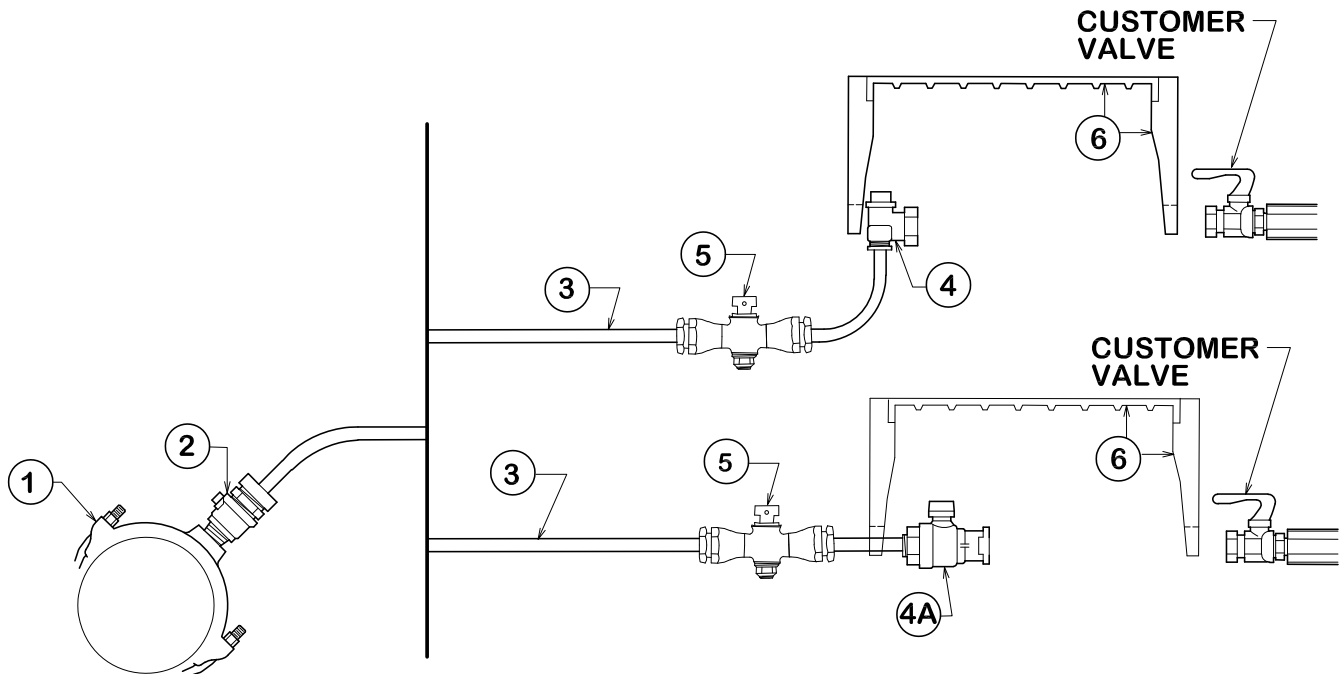


**NOTES:**

- ① Service saddle and CC threads installed per manufacturer's recommendations.  
All main types: Ford S70/S90
- ② Corporation Stop: Ford FB 1000-4- 1"
- ③ Service tubing: Type K copper - soft - 1"
- ④ Meter box valve:  
4 = Ford Angle Stop - BA-43-444W - 1"  
4A = Ford Straight Stop - B11-444W - 1"
- ⑤ Ball valve
- ⑥ Meter box and lid: Old Castle meter box, CI lid with Reader #36

PREFERRED METHOD



UPON CITY  
ENGINEER'S APPROVAL



CITY OF BRYAN  
*The Good Life, Texas Style.*

**CITY OF COLLEGE STATION  
STRAIGHT OR ANGLE TAP 1"**

DATE

**FEB 2021**

**B/CS UNIFIED  
STANDARD DETAIL**

DETAIL NO.

**W7-01**



CITY OF COLLEGE STATION