

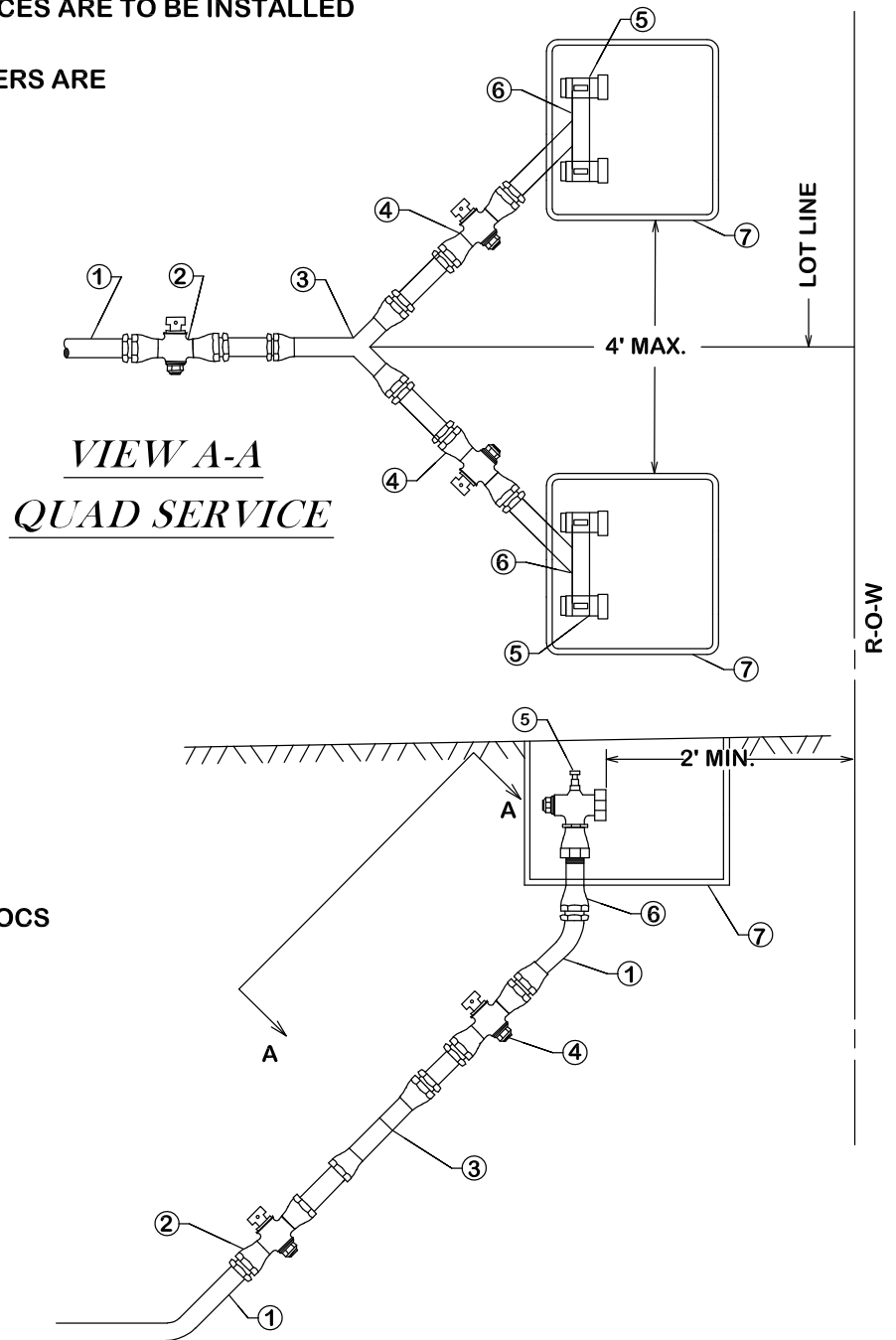
SPECIAL CONDITIONS

ALL CONNECTIONS SHALL BE PACK-JOINT COMPRESSION TYPE

ALL SERVICE EXTENSIONS/APPURTENANCES ARE TO BE INSTALLED WITH THE MAIN LINE CONSTRUCTION

A MAXIMUM OF FOUR ~ 0.75" WATER METERS ARE ALLOWED FOR THIS CONFIGURATION

MATERIAL USED SHALL BE AS SPECIFIED OR AN APPROVED EQUAL



***VIEW A-A
QUAD SERVICE***

- ① Service tubing: Type K copper - soft - 2"
- ② Ford Ball Valve - B44-777-NL - 2"
- ③ Ford 'Y' Branch - Y44-274-NL - 2" x 1" x 1"
- ④ Ford Ball Valve - B44-444-NL - 1"
- ⑤ Ford Angle Stop KV13-332W-NL - .75" x .75" Meter Nut Swivel
- ⑥ Ford 'U' Branch - U48-43-NL
- ⑦ Dual Concrete Meter Box - Provided by COCS



CITY OF BRYAN
The Good Life, Texas Style.

**CITY OF COLLEGE STATION
QUAD SERVICE CONNECTION**

DATE

DEC 2020

**B/CS UNIFIED
STANDARD DETAIL**

DETAIL NO.

W5-01



CITY OF COLLEGE STATION