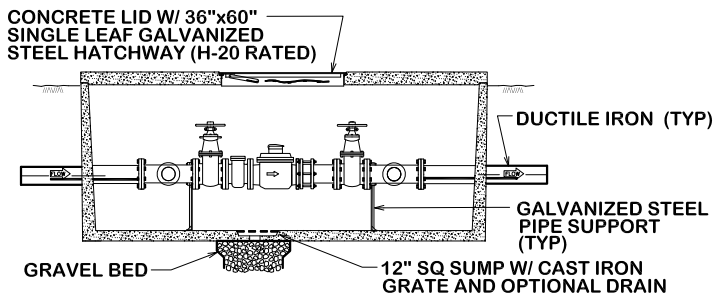
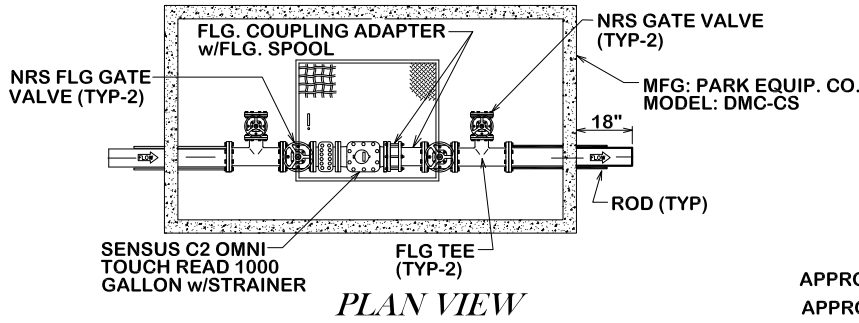


**SPECIAL CONDITIONS**

1. METER REGISTER SHALL BE NO DEEPER THAN 12 INCHES BELOW FINISHED GRADE.
2. FLOOR OF VAULT WILL BE A MINIMUM OF 6 INCHES FROM BOTTOM OF ANY PIPING APPARATUS OR METER WITHIN THE VAULT.
3. REINFORCED CONCRETE VAULT BASE (FLOOR) SHALL BE CONSTRUCTED USING A STANDARD FIVE SACK CONCRETE MIX AND REINFORCING COMPRISED OF #3 REBAR ON 12 INCH CENTERS WITH A MINIMUM BASE THICKNESS OF 6 INCHES.
4. SET SCREW RETAINER GLANDS SHALL BE INSTALLED AT EACH FITTING ON MECHANICAL JOINT PIPE.
5. VALVES SHALL MEET THE CITY SPECIFICATIONS FOR VALVES.
6. THERE SHALL BE NO PIPING UNDER THE FLOOR OF THE VAULT.

MODEL	SIZE	L1	W1	H1	WEIGHT LBS
DMC-CS3	3"	8'-8"	5'-0"	4'-6"	12,000
DMC-CS4	4"	8'-8"	5'-0"	4'-6"	12,000
DMC-CS6	6"	11'-0"	6'-0"	4'-9"	12,000



**APPROVED 3" OR LARGER COMPOUND METERS, VAULTS & MATERIALS**

APPROVED METERS - SENSUS SRH (U. S. GALLONS)

APPROVED VAULTS - PARK DMC-BR PRE-CAST CONCRETE VAULT W/ ADEQUATE ACCESS AND VAULT DIMENSIONS FOR METER SELECTED

APPROVED MATERIALS - DUCTILE IRON PIPE WITH MECHANICAL JOINT. SET SCREW RETAINER GLANDS WILL BE BASED ON ALL M.J. FITTINGS.

ANY DEVIATIONS FROM THE ABOVE SPECIAL CONDITIONS OR APPROVED METERS, VAULTS OR MATERIALS MUST BE SUBMITTED TO THE DIVISION MANAGER, WATER SERVICES, 72 HOURS PRIOR TO ANTICIPATED DEVIATION.



CITY OF BRYAN  
The Good Life, Texas Style.

**CITY OF COLLEGE STATION  
METER VAULT ASSEMBLY**

DATE

**FEB 2021**

**B/CS UNIFIED  
STANDARD DETAIL**

DETAIL NO.

**W5-00**



CITY OF COLLEGE STATION