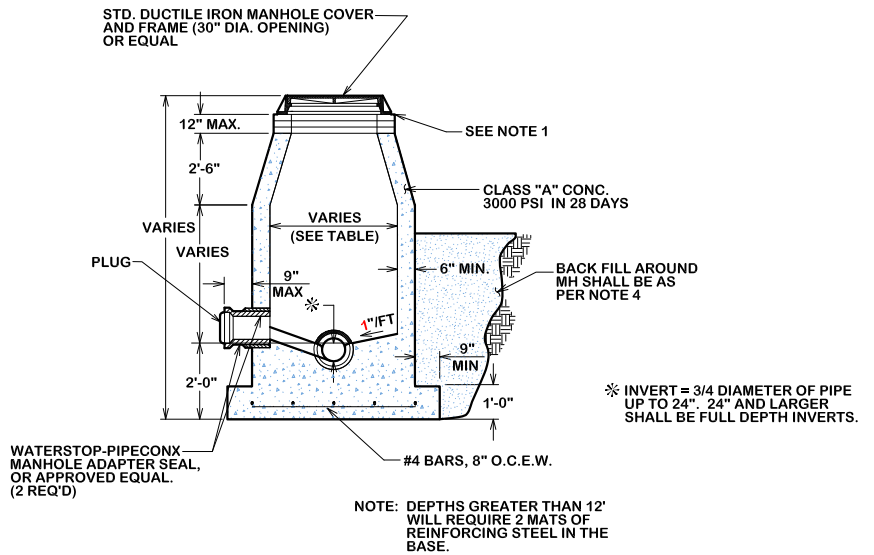


**NOTES:**

1. A MAX. OF 4 AND A MIN. OF 2 THROAT RINGS SHALL BE USED AT EACH MANHOLE IN NEW OR EXISTING RIGHT-OF-WAY.
2. USE NP 1 SEALANT OR APPROVED EQUAL BETWEEN RING/COVER, ADJUSTMENT AND CHIMNEY OR CORBEL/CONE SECTION.
3. MANHOLE BASE THICKNESS AND FOUNDATION FROM FLOWLINE TO RIM AS FOLLOWS:  

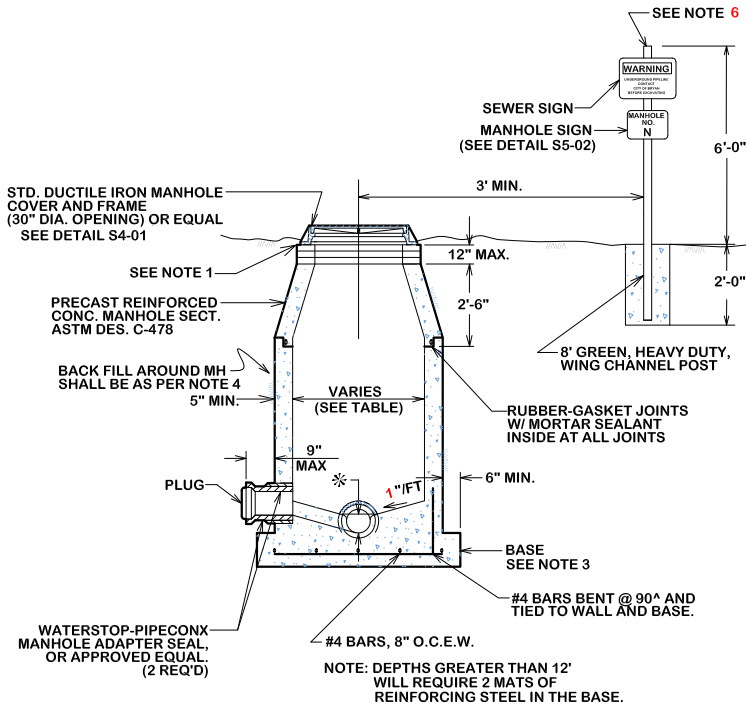
| MANHOLE DEPTH (FT.) | BASE THICKNESS |
|---------------------|----------------|
| 0 - 12              | 8"             |
| 12 AND OVER         | 12"            |
4. MANHOLE LOCATION AND COMPACTION AS FOLLOWS:  

| LOCATION       | COMPACTION REQUIREMENT             |
|----------------|------------------------------------|
| PAVEMENT       | 98 % STANDARD PROCTOR - ASTM D 698 |
| LANDSCAPE AREA | 90 % STANDARD PROCTOR - ASTM D 698 |
5. IN FLOODPLAINS OR AREAS OF CONCENTRATED FLOW, THE CONE SHALL EXTEND 1 FOOT ABOVE THE BASE FLOOD ELEVATION OR A BOLT DOWN WATER-TIGHT RING AND COVER SHALL BE USED, VENTED WHERE REQUIRED.
6. WARNING SIGN ONLY TO BE PLACED WHERE SEWER CROSSES OPEN FIELDS.



**CAST IN PLACE MANHOLE**

| MANHOLE DIA. | MAIN SIZE     |
|--------------|---------------|
| 4 FT         | <18in.        |
| 5 FT         | ≥18in. <30in. |
| 6 FT         | ≥36in.        |



**PRE-CAST MANHOLE**



CITY OF BRYAN  
The Good Life, Texas Style.

**STANDARD MANHOLE**

DATE

**APR 2024**

**B/C S UNIFIED  
STANDARD DETAIL**

DETAIL NO.

**S1-00**



CITY OF COLLEGE STATION