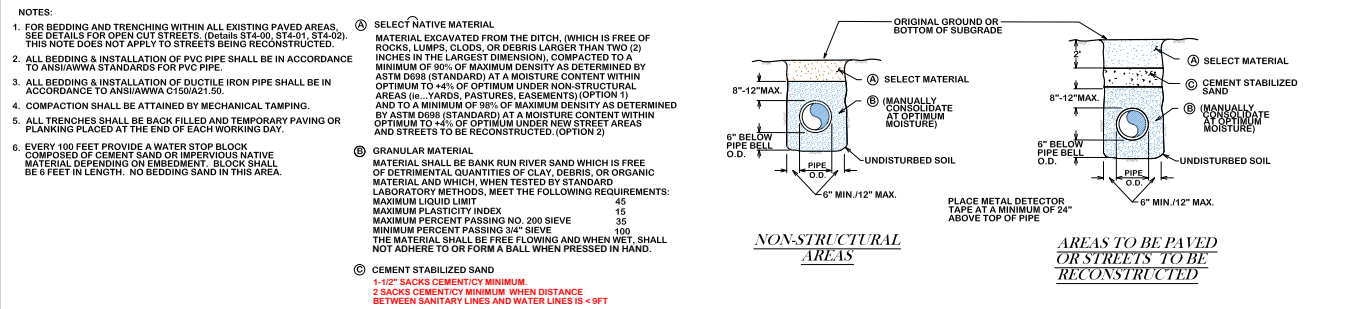


CAST IN PLACE MANHOLE

PRE-CAST MANHOLE

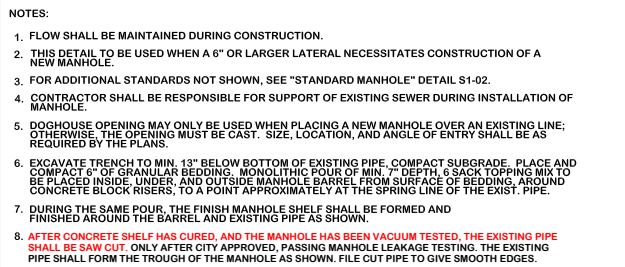
**STANDARD MANHOLE**

S1-00



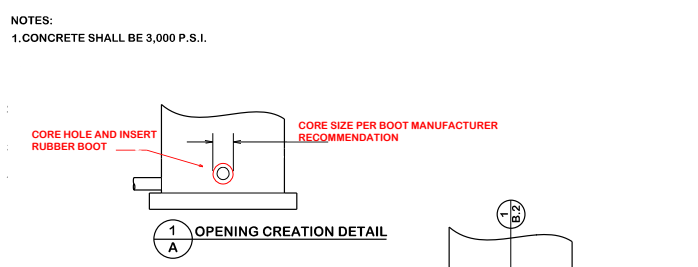
BEDDING AND TRENCH FOR DI PIPE & PVC PIPE

S1-01



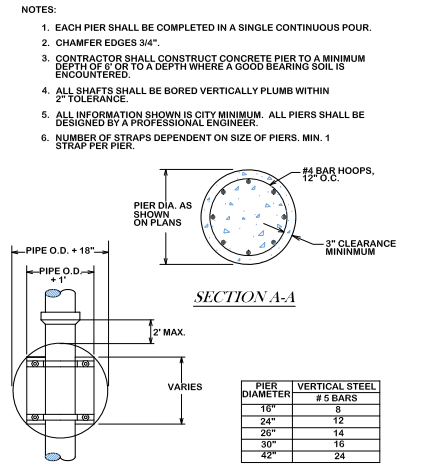
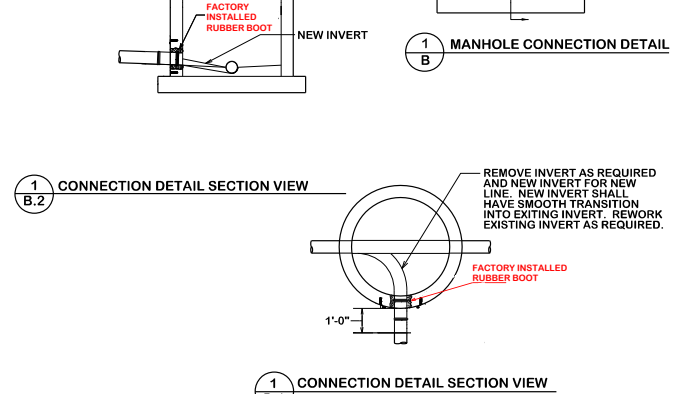
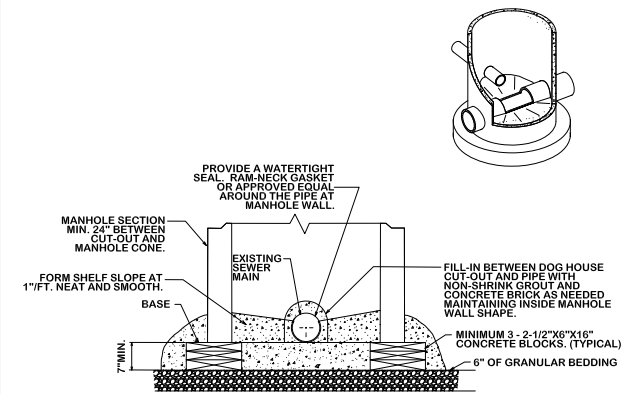
CITY OF COLLEGE STATION GRAVITY SEWER DOGHOUSE MANHOLE

S3-00



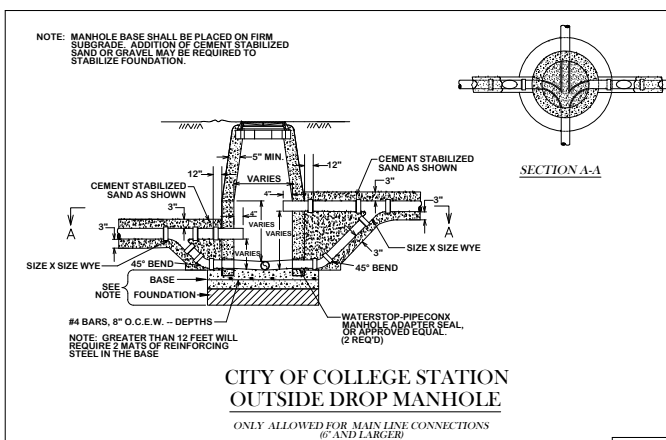
STANDARD MANHOLE TIE-IN

S3-01



TYPICAL CONCRETE DRILLED PIER FOR AERIAL SEWER

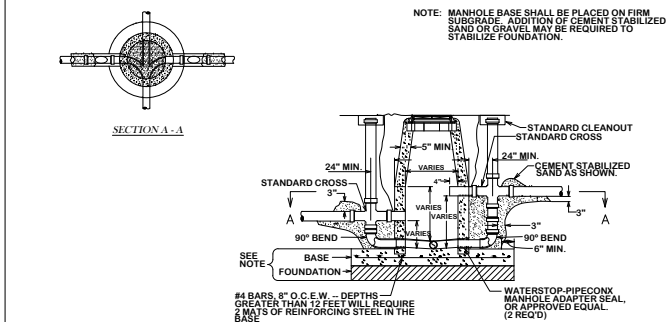
S4-00



CITY OF COLLEGE STATION OUTSIDE DROP MANHOLE

ONLY ALLOWED FOR MAIN LINE CONNECTIONS 6" AND LARGER

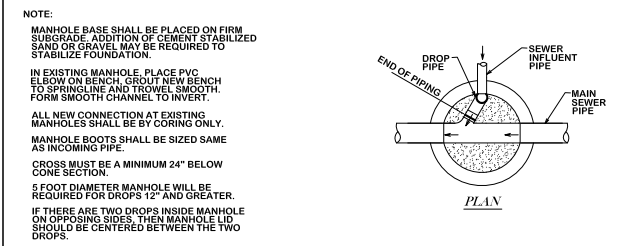
S2-00



CITY OF BRYAN OUTSIDE DROP MANHOLE

ONLY WHEN APPROVED BY CITY ENGINEER

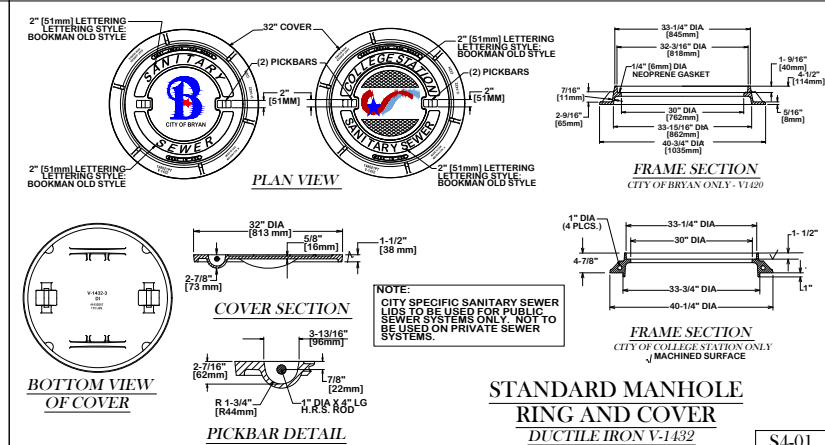
S2-01



STANDARD DROP MANHOLE

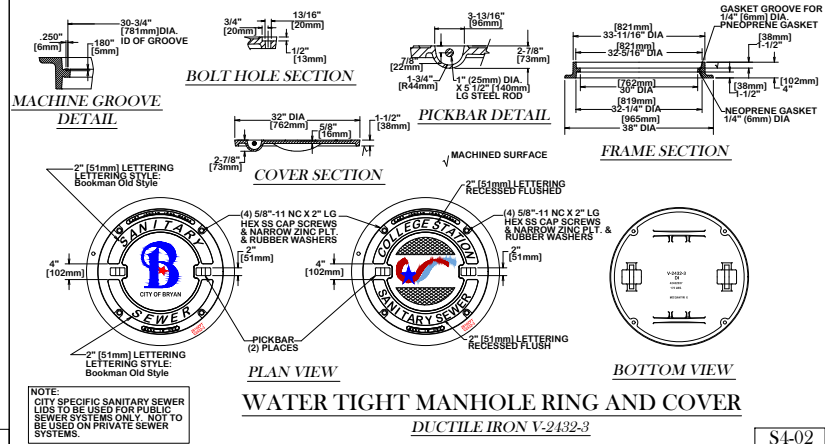
CITY OF BRYAN - DROP MANHOLE TO BE USED ON LINES UP TO 12" IN SIZE  
 CITY OF COLLEGE STATION - DROP MANHOLE TO BE USED ON LINES UP TO 1" IN SIZE

S2-02



STANDARD MANHOLE RING AND COVER DUCTILE IRON V-1432

S4-01



WATER TIGHT MANHOLE RING AND COVER DUCTILE IRON V-2432-3

S4-02

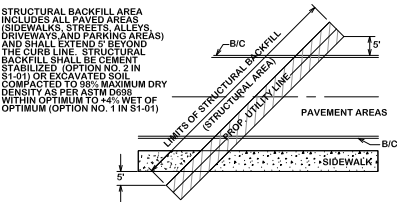
**GENERAL NOTES:**

ALL AREAS WHERE EXISTING VEGETATION AND GRASS COVER HAVE BEEN BARED BY CONSTRUCTION SHALL BE ADEQUATELY BLOCK SOGGED OR HYDROMULCHED AND WATERED UNTIL GROWTH IS ESTABLISHED. IN DEVELOPED AREAS WHERE GRASS IS PRESENT, BLOCK SOG WILL BE REQUIRED. BARED AREAS SHALL BE SEEDED OR SOGGED WITHIN 14 CALENDAR DAYS OF LAST DISTURBANCE.

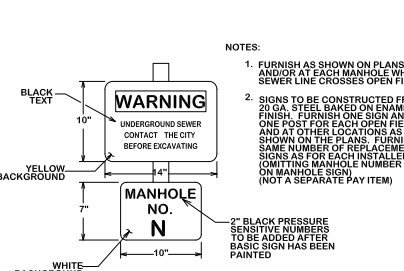
APPROVED EROSION CONTROL MEASURES MUST BE INSTALLED DURING THE ENTIRE TIME THAT EARTH HAS BEEN BARED BY CONSTRUCTION AND SHALL STAY IN PLACE UNTIL ACCEPTABLE VEGETATIVE GROWTH IS ESTABLISHED. AFTER CONSTRUCTION IS COMPLETE, AND THEN REMOVED BY CONTRACTOR.

ALL EROSION CONTROL MEASURES SHOULD BE CLEANED OF SILT AFTER EVERY RAIN.

ESTABLISHMENT OF VEGETATION MAY BE A WARRANTY ITEM.



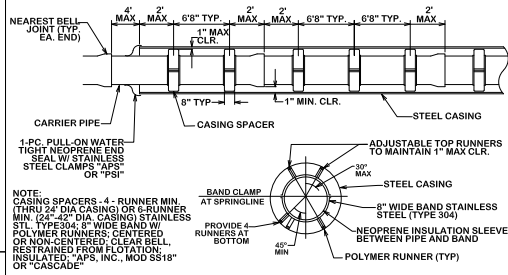
**STRUCTURAL BACKFILL AREA**  
S5-00



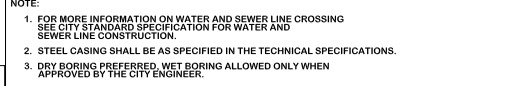
**STANDARD CLEAN OUT FOR MAIN LINE**  
S5-01



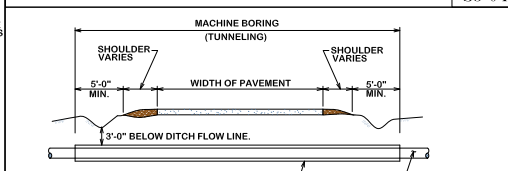
**SEWER WARNING AND MANHOLE IDENTIFICATION SIGN**  
S5-02



**TYPICAL URBAN CITY STREET CROSSING**  
S5-03

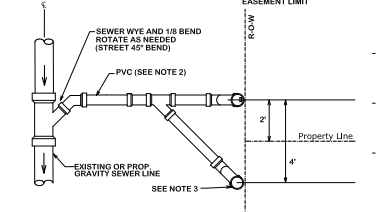


**TYPICAL RURAL STREET CROSSING**  
S5-04

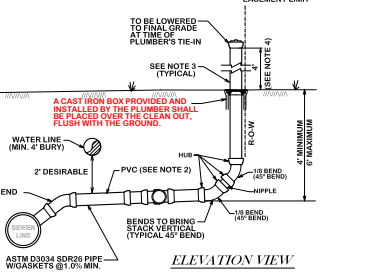


**TYPICAL RURAL STREET CROSSING**  
S5-05

- NOTE:**
1. ALL MATERIAL SHALL BE ASTM D3034 SDR26 W/ GASKETS
  2. ALL SERVICE CONNECTIONS & EXTENSIONS ARE TO BE INSTALLED WITH THE MAIN LINE CONSTRUCTION.
  3. A CLEAN OUT IS REQUIRED AND WILL BE INSTALLED BY THE CONTRACTOR AT THE ROW FOR EACH LONG AND SHORT SIDE SERVICE. CLEANOUT SHALL INCLUDE A BRASS PLUG. CLEANOUTS SHALL BE EXTENDED 4 FEET ABOVE NATURAL GROUND. CLEANOUT CAP FITTING SHALL BE PLACED ON TOP.
  4. LOT CORNERS SHALL BE MARKED WITH A LATH UNDER THE SUPERVISION OF A S.P.L.S. UPON COMPLETION OF CONSTRUCTION.
  5. "STANDARD" SERVICE CONNECTIONS APPLY WHEN TRENCH IS LESS THAN 7' DEEP.
  6. "DEEP" SERVICE CONNECTIONS APPLY WHEN TRENCH IS MORE THAN 7' DEEP.
  7. SERVICE SHALL BE AS SHALLOW AS POSSIBLE AND STILL SERVICE LOT.
  8. WHERE A SINGLE SERVICE THAT SERVES A SINGLE RESIDENCE TAPS INTO A MANHOLE NEAR THE PROPERTY LINE OF THAT LOT A SEWER STACK SHALL NOT BE REQUIRED.
  9. WHERE A CLEANOUT WILL BE IN A TRAFFIC AREA, A CAST IRON TOP HAT WILL BE REQUIRED.
  10. **NEW CONSTRUCTION (TEMPORARY) USE GLUE CAP IN PLACE OF FEMALE ADAPTER AND BRASS PLUG.**



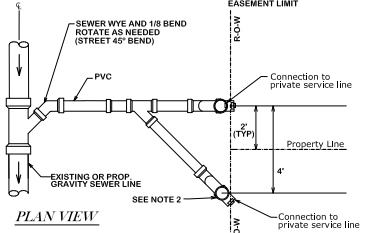
**PLAN VIEW**



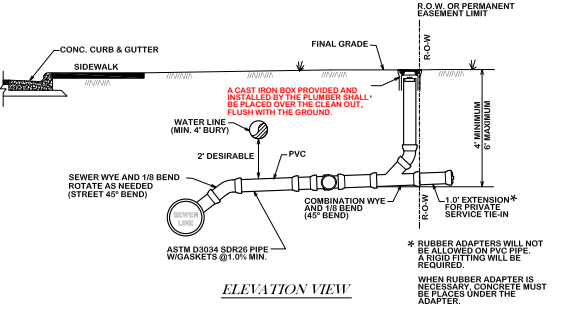
**ELEVATION VIEW**

**STANDARD SEWER SERVICE CONNECTION**  
NEW CONSTRUCTION ONLY  
S6-00

- NOTE:**
1. ALL MATERIAL SHALL BE ASTM D3034 SDR26 W/ GASKETS
  2. SERVICE SHALL BE AS SHALLOW AS POSSIBLE AND STILL SERVICE LOT
  3. WHERE A SINGLE SERVICE THAT SERVES A SINGLE RESIDENCE TAPS INTO A MANHOLE NEAR THE PROPERTY LINE OF THAT LOT A SEWER STACK SHALL NOT BE REQUIRED.
  4. WHERE A CLEANOUT WILL BE IN A TRAFFIC AREA, A CAST IRON TOP HAT WILL BE REQUIRED.
  4. A CLEANOUT MUST BE INSTALLED ON EACH SERVICE RE-CONNECTION AT THE ROW LINE.



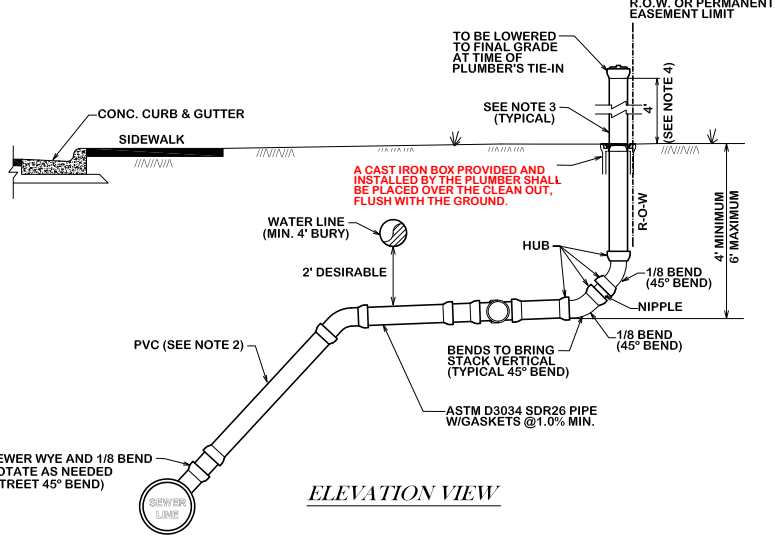
**PLAN VIEW**



**ELEVATION VIEW**

**STANDARD SEWER SERVICE RE-CONNECTION**  
PLUMBER CONNECTION OR CIP RECONSTRUCTION  
S6-01

- NOTE:**
1. ALL MATERIAL SHALL BE ASTM D3034 SDR26 W/ GASKETS
  2. ALL SERVICE CONNECTIONS & EXTENSIONS ARE TO BE INSTALLED WITH THE MAIN LINE CONSTRUCTION.
  3. A CLEAN OUT IS REQUIRED AND WILL BE INSTALLED BY THE CONTRACTOR AT THE ROW FOR EACH LONG AND SHORT SIDE SERVICE CLEANOUT SHALL INCLUDE A BRASS PLUG.
  4. CLEANOUTS SHALL BE EXTENDED 4 FEET ABOVE NATURAL GROUND. CLEANOUT CAP FITTING SHALL BE PLACED ON TOP.
  5. **NEW CONSTRUCTION (TEMPORARY) USE GLUE CAP IN PLACE OF FEMALE ADAPTER AND BRASS PLUG.**



**ELEVATION VIEW**

**SEWER DEEP SERVICE CONNECTION**

NEW CONSTRUCTION ONLY

S8-00

REVISIONS:  
S5-00 & S6-01 revised 10/26/2012.

**BRYAN - COLLEGE STATION**  
**STANDARD SEWER DETAILS**



DRAWN BY: K.L.  
DATE: APR 2024  
SCALE: N T S  
APPROVED: W. P. K.

S2  
SHEET 2 OF 2