

24" X 24" X 6"  
28-DAY CONCRETE  
STRENGTH = 2000 psi  
WITH #4 BAR AROUND  
ALL VALVE BOX.

TRAFFIC RATED COPPERHEAD  
SNAKEPIT TEST STATION OR  
APPROVED EQUAL

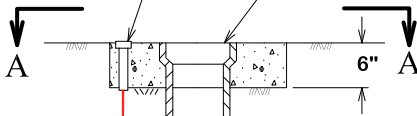
**VIEW A - A**

**NOTE:**

1. VALVE EXTENSION TO BE USED ONLY WHEN TOP OF GATE VALVE IS DEEPER THAN 5 FEET FROM FINISHED GRADE.
2. ALL VALVE OPERATING NUT EXTENSIONS ARE TO BE MADE OF STEEL, SIZED AS NOTED, AND PAINTED WITH TWO (2) COATS OF METAL PAINT.
3. EXTENSIONS SHALL BE A MINIMUM OF ONE (1) FOOT LONG.
4. VALVE BOX LIDS LOCATED ON VALVES TO ISOLATE FIRE SUPPRESSION LINES FROM PUBLIC WATER LINES SHALL BE **EJ 6800**, **PRODUCT 06800044** LOCKABLE LID.

TRAFFIC RATED COPPERHEAD  
SNAKEPIT TEST STATION OR  
APPROVED EQUAL

VALVE BOX PER SPECS WITH BOX  
EXTENSION AS NEEDED



2" SQUARE AWWA NUT  
EXTENSION WITH  
CENTERING COLLAR.  
TERMINATE 4' TO 5'  
FROM TOP OF BOX.

AWWA C900  
PRESSURE PIPE

STD. GATE VALVE  
W/STAINLESS  
STEEL BOLTS

14 ga. INSULATED  
COPPER TRACER  
WIRE

PVC OR D.I. PIPE

BLOCK AS DIRECTED.  
MIN. DIMENSION APPROX.  
EQUAL TO ONE BAG OF  
SACKRETE



CITY OF BRYAN  
*The Good Life, Texas Style.*

**GATE VALVE & BOX**

DATE

**DECEMBER 2020**

**B/CS UNIFIED  
STANDARD DETAIL**

DETAIL NO.

**W1-00**



CITY OF COLLEGE STATION