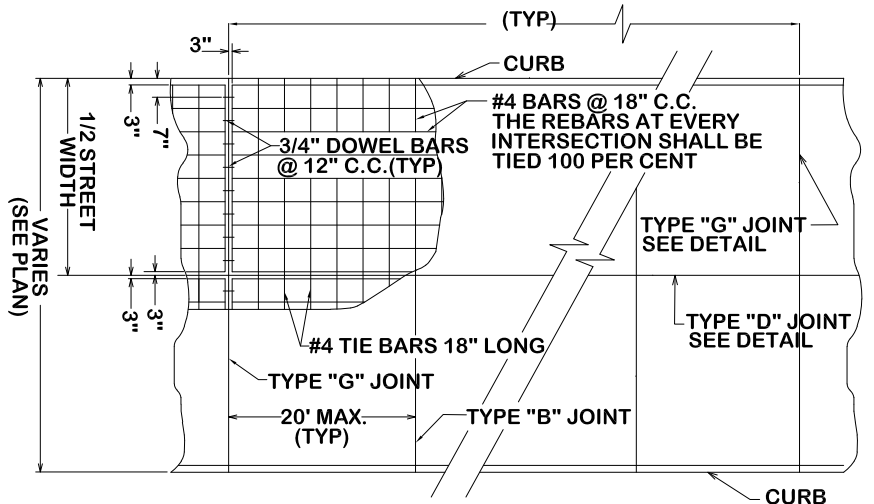


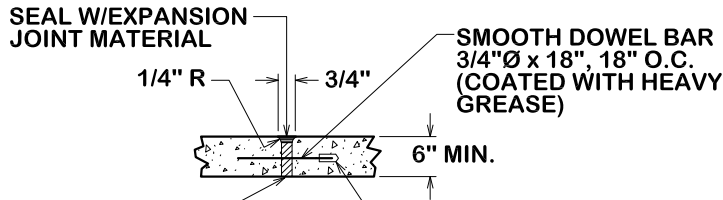
**TYPE "D"**

**LONGITUDINAL JOINT**

LONGITUDINAL JOINTS SHALL BE REQUIRED ONLY ON THE CENTERLINE OF THE PAVEMENT & IN INTERSECTIONS AS DETAILED



**TYPICAL JOINT & REINFORCEMENT LAYOUT FOR CONCRETE PAVEMENT**

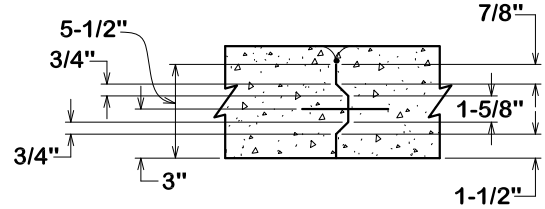


RECYCLED MATERIAL, 3/4" THICK AS MANUFACTURED BY J.D. RUSSELL COMPANY, OR APPROVED EQUAL

3" LONG METAL OR PLASTIC CAP, INSIDE DIAMETER TO BE 1/16" GREATER THAN DIAMETER OF DOWEL BAR. CAP MUST BE LONG ENOUGH TO COVER 2" OF DOWEL AND HAVE STOP SO END OF CAP IS 1" FROM END OF BAR.

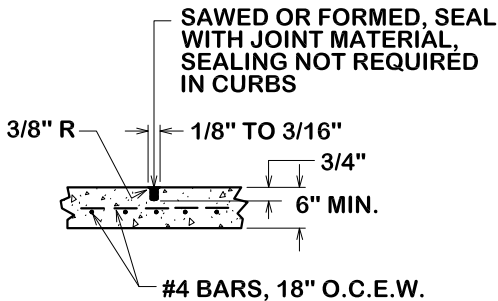
**TYPE "G"**

**EXPANSION & CONSTRUCTION JOINT**



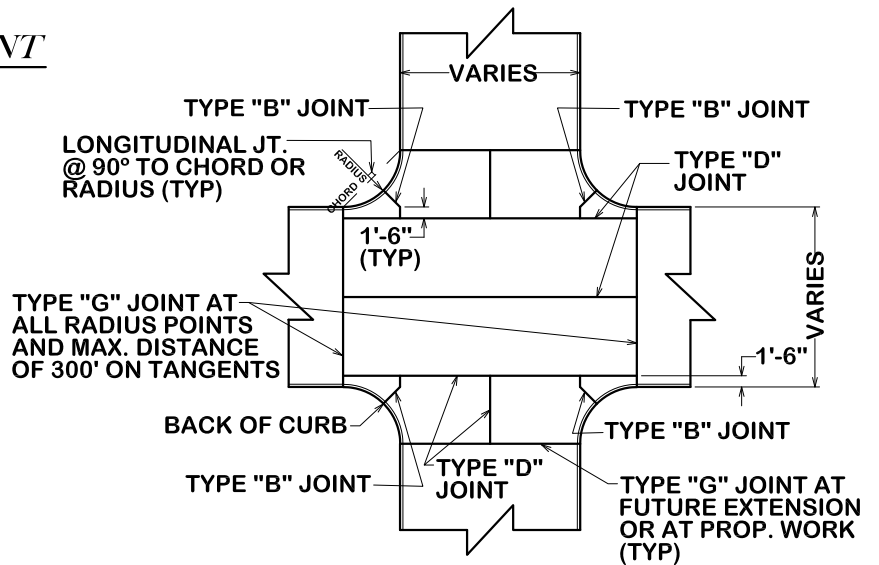
**METAL KEYWAY PLATE**

NOTE: EXPANSION JOINTS AS SHOWN AND AT EACH RADIUS POINT. CURB EXPANSION JOINTS SHALL BE AT 60' CENTERS. CURB CONTROL JOINTS SHALL BE AT 10' CENTERS.



**TYPE "B"**

**CONTRACTION JOINT**



**TYPICAL JOINT LAYOUT AT CONCRETE INTERSECTION**



CITY OF BRYAN  
The Good Life, Texas Style.

**CONCRETE PAVEMENT JOINT LAYOUT**

DATE  
**FEB. 2018**

**B/CS UNIFIED  
STANDARD DETAIL**

DETAIL NO.  
**ST3-00**



CITY OF COLLEGE STATION