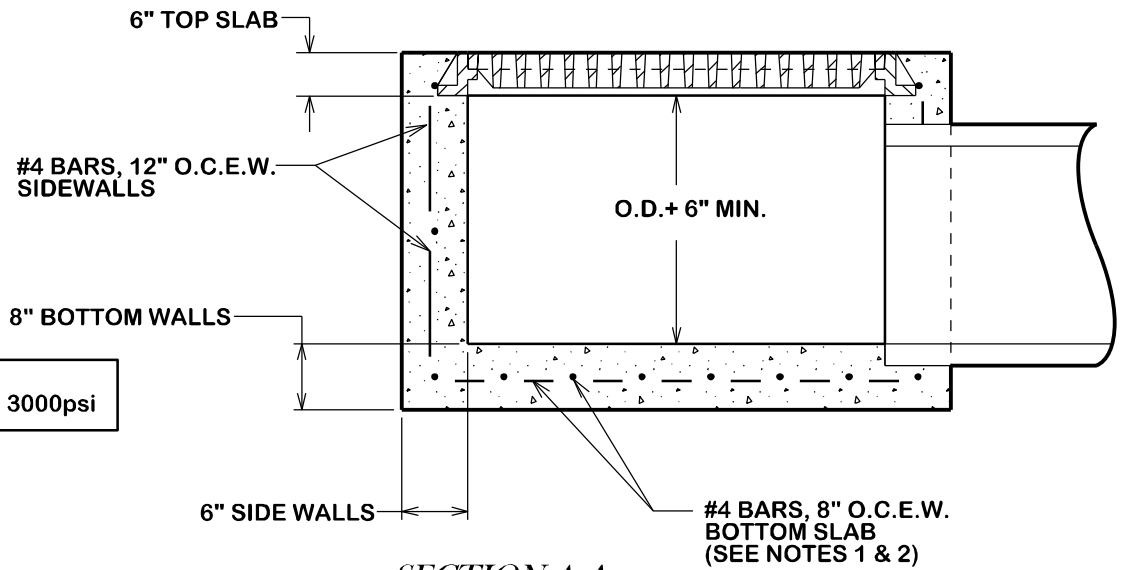


*PLAN*

GRATE SHALL BE BICYCLE PROOF.  
PEDESTRIAN GRATES SHALL BE  
INSTALLED IN SIDEWALK AREA.



IN STREETS 28-DAY  
CONCRETE STRENGTH = 3000psi

*SECTION A-A*

**GENERAL NOTES:**

1. BASE THICKNESS AND FOUNDATION SHALL BE AS FOLLOWS:

| INLET DEPTH (FT.)<br>(MEASURED FROM FLOWLINE TO FINAL GRADE) | BASE THICKNESS |
|--|----------------|
| 0 - 12   | 8"             |
| 12 AND OVER  | 12"            |

2. DEPTHS GREATER THAN 12' WILL REQUIRE 2 MATS OF REINFORCING STEEL IN THE BASE.



CITY OF BRYAN  
*The Good Life, Texas Style.*

**GRATE INLET**

DATE

**AUG. 2012**

**B/CS UNIFIED  
STANDARD DETAIL**

DETAIL NO.

**D1-03**



CITY OF COLLEGE STATION