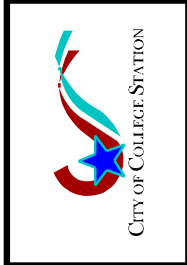


LS1-00

REVISIONS

COLLEGE STATION
 STANDARD LIFT STATION
 DETAILS



DRAWN BY: J.C.A
DATE: 08-01-12
SCALE: N T S
APPROVED: S.E.D.

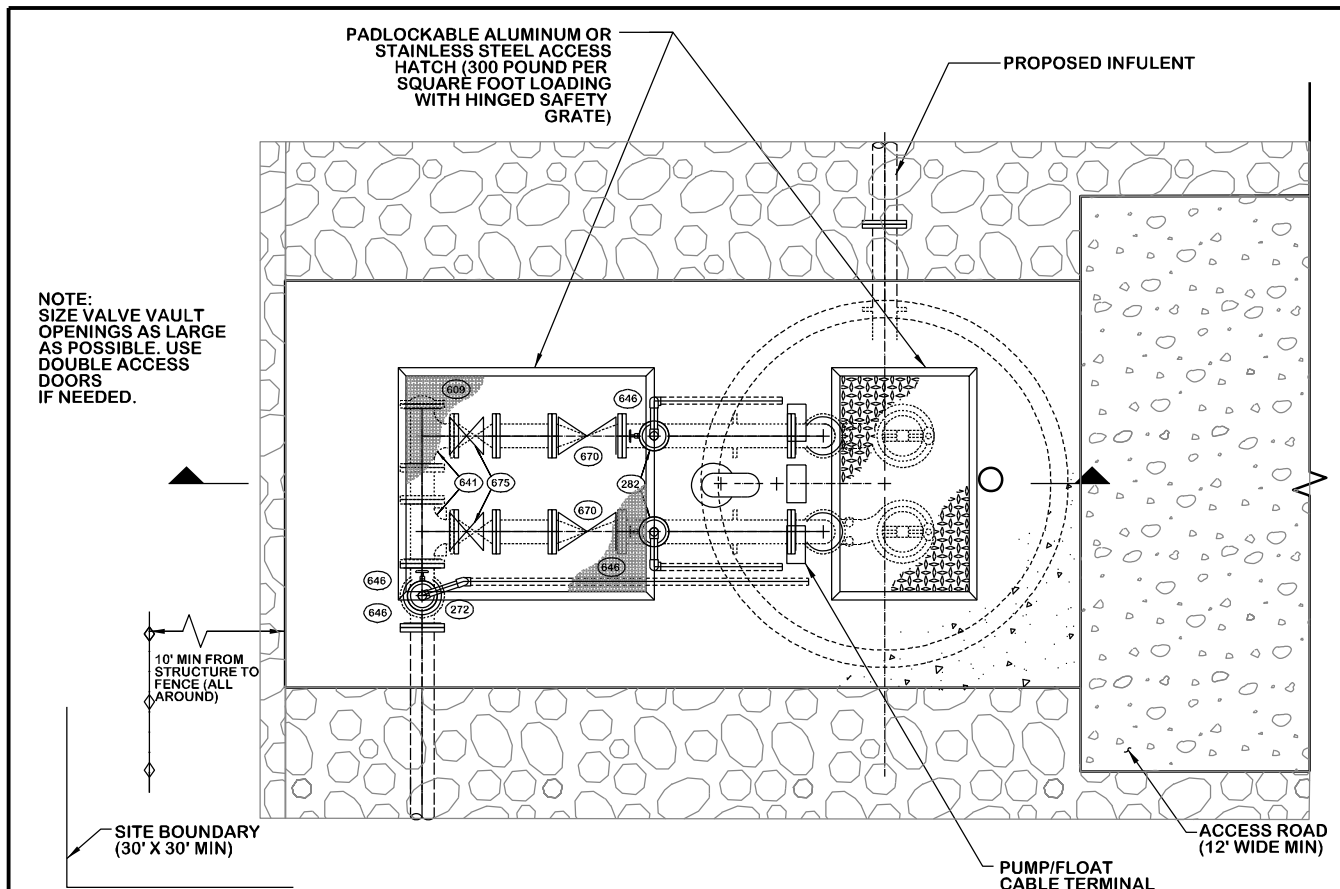
REVISIONS

COLLEGE STATION
STANDARD LIFT STATION
DETAILS



DRAWN BY: J.C.A
DATE: 08-01-12
SCALE: N T S
APPROVED: S.E.D.

FIGURE:
LS
SHEET 2 OF 2



PLAN VIEW

NOTE:
SIZE VALVE VAULT
OPENINGS AS LARGE
AS POSSIBLE. USE
DOUBLE ACCESS
DOORS
IF NEEDED.

NOTE:
INCLUDE BYPASS ON FORCE
MAIN WITH ISOLATION
VALVE, CHECK VALVE, AND
6" MALE CAMLOK FITTING
WITH CAP

PIPING CHART

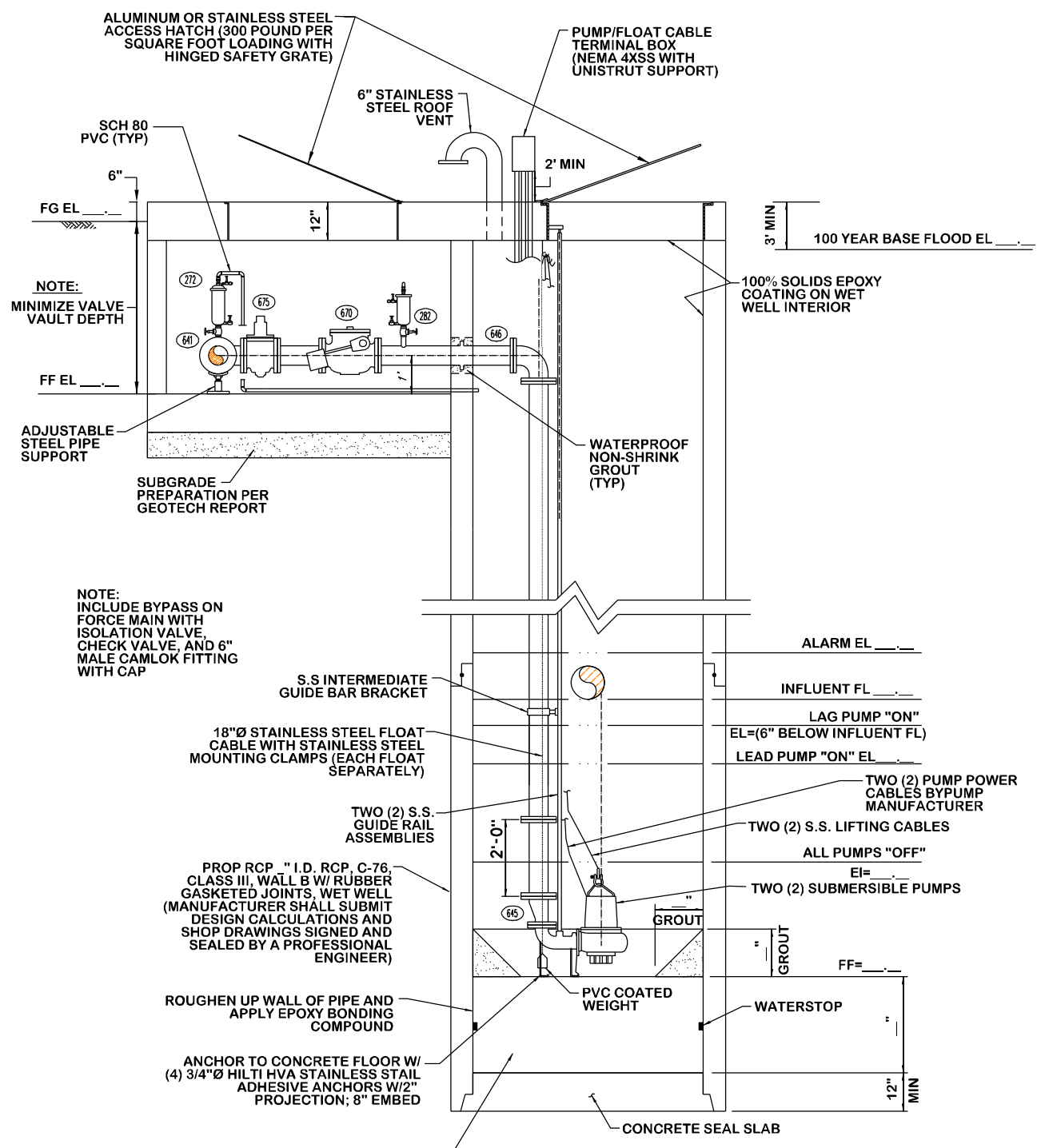
- (272) 2" AIR RELEASE VALVE
- (282) 2" AIR & VACUUM VALVE
- (609) " BLIND FLANGE
- (641) "X" TEE, FJ
- (645) "X" ECCENTRIC REDUCER, FJ
- (646) "X90° BEND, FJ
- (670) " SWING CHECK VALVE, FJ
- (675) " ECCENTRIC PLUG VALVE, FJ

PIPING NOTES

1. ALL PIPE TO BE DUCTILE IRON PIPE (DIP) UNLESS OTHERWISE NOTED.
2. DENOTES THE USE OF A RESTRAINED, PUSH-ON CONNECTION.
3. UNLESS OTHERWISE NOTED ON THE CONSTRUCTION DRAWINGS, ALL PIPE CENTERED IN WALLS SHALL HAVE A WALL FLANGE. ALL WALL FLANGES SHALL BE CAST-IN-PLACE WITH STRUCTURAL CONCRETE OR GROUTED IN BLOCK-OUTS WITH NON-SHRINK GROUT.

STRUCTURAL LIFT STATION NOTES:

1. ALL CONCRETE SHALL TEST 4000 PSI AT 28 DAYS.
2. ALL CONCRETE REINFORCING BARS SHALL CONFORM TO ASTM A615 GRADE 60, EXCEPT #3 BARS MAY CONFORM TO GRADE 40.
3. WIRE MESH SHALL CONFORM TO ASTM A185. LAP ONE FULL MESH AT SIDES AND ENDS.
4. DETAILING AND FABRICATION OF CONCRETE REINFORCEMENT AND ACCESSORIES SHALL BE IN ACCORDANCE WITH ACI-315 LATEST EDITION.
5. LAP ALL CONTINUOUS REINFORCING BARS 36 DIAMETERS AT SPLICES, TEES AND CORNERS.
6. THE USE OF HEAT TO FACILITATE THE BENDING OF REINFORCING BARS WILL NOT BE PERMITTED.
7. NO ENGINEERING DRAWING MAY BE REPRODUCED FOR USE AS SHOP DRAWINGS.
8. RCP MANUFACTURER TO DESIGN WALL THICKNESS AND REINFORCING PER GEOTECHNICAL REPORT.
9. DESIGN AND CONSTRUCTION SHALL CONFORM TO ACI 350 R-89.
10. ENGINEER SHALL PREPARE SITE SPECIFIC STRUCTURAL DESIGN.



PROFILE

NOTE:
INCLUDE BYPASS ON
FORCE MAIN WITH
ISOLATION VALVE,
CHECK VALVE, AND 6"
MALE CAMLOK FITTING
WITH CAP

NOTE:
ENGINEER SHALL FILL IN
ALL BLANKS BASED ON
SITE SPECIFIC DESIGN.

LS2-00