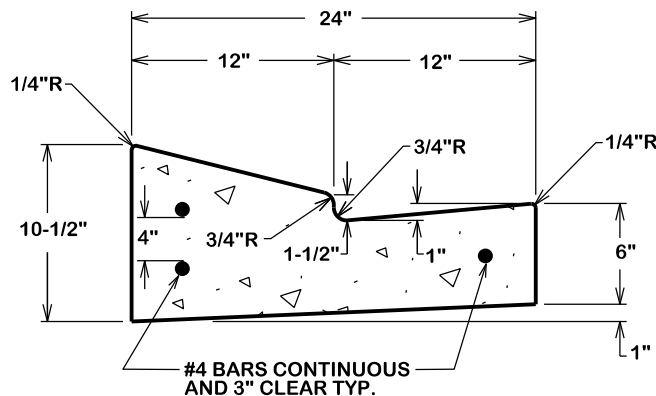


NOTE:

TYPE "G" EXPANSION JOINTS IN CURB & GUTTER SHALL BE SPACED AT A MAXIMUM DISTANCE OF 40' APART AND AT ALL RADIUS POINTS, P.T.'S AND P.C.'S. TYPE "B" CONTRACTION JOINTS IN CURB & GUTTER SHALL BE SPACED AT A MAXIMUM DISTANCE OF 10' APART.

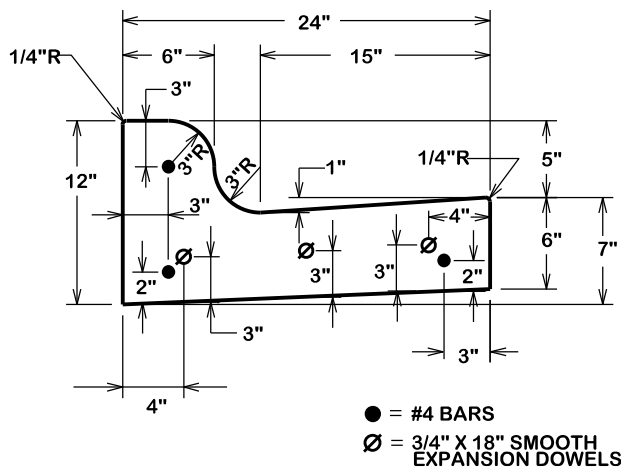


24" LAY DOWN
GUTTER SECTION

ST1-00

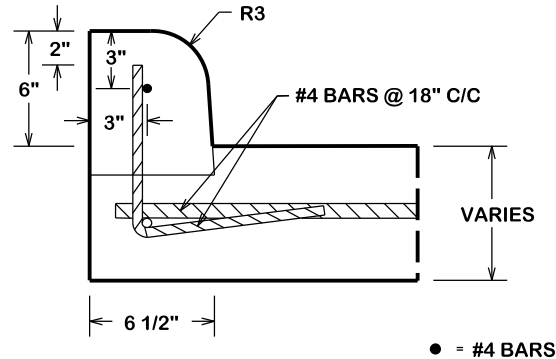
NOTE:

TYPE "G" EXPANSION JOINTS IN CURB & GUTTER SHALL BE SPACED AT A MAXIMUM DISTANCE OF 40' APART AND AT ALL RADIUS POINTS, P.T.'S AND P.C.'S. TYPE "B" CONTRACTION JOINTS IN CURB & GUTTER SHALL BE SPACED AT A MAXIMUM DISTANCE OF 10' APART.



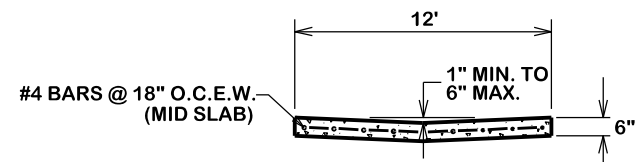
TYPICAL COMBINED
CURB & GUTTER SECTION

ST1-01

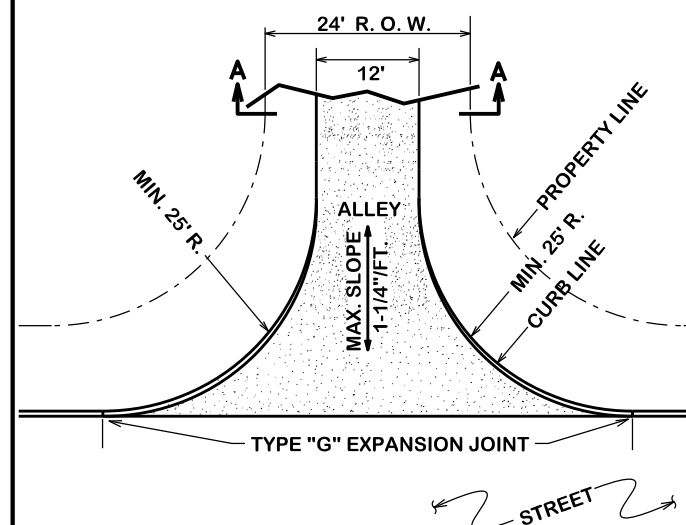


DOWELLED IN CURBS
DETAIL

ST1-02



SECTION A-A



ALLEY PAVING

ST1-06

GENERAL NOTES:

ALL AREAS WHERE EXISTING VEGETATION AND GRASS COVER HAVE BEEN BARED BY CONSTRUCTION SHALL BE ADEQUATELY BLOCK SODDED OR HYDROMULCHED AND WATERED UNTIL GROWTH IS ESTABLISHED. IN DEVELOPED AREAS WHERE GRASS IS PRESENT, BLOCK SOD WILL BE REQUIRED. BARED AREAS SHALL BE SEEDED OR SODDED WITHIN 14 CALENDAR DAYS OF LAST DISTURBANCE.

APPROVED EROSION CONTROL MEASURES MUST BE INSTALLED DURING THE ENTIRE TIME THAT EARTH HAS BEEN BARED BY CONSTRUCTION AND SHALL STAY IN PLACE UNTIL ACCEPTABLE VEGETATIVE GROWTH IS ESTABLISHED AFTER CONSTRUCTION IS COMPLETE AND THEN REMOVED BY CONTRACTOR.

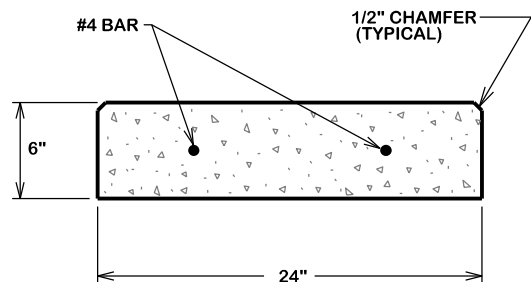
ALL EROSION CONTROL MEASURES SHOULD BE CLEANED OF SILT AFTER EVERY RAIN.

ALL TRAFFIC SIGNALS AND APPURTENANCES, AND ALL PAVEMENT MARKINGS AND MARKERS SHALL BE IN ACCORDANCE WITH TXDOT STANDARDS

REFER TO SPEC 31 17 23.23 (PAVEMENT MARKINGS) FOR ADDITIONAL LOCAL REQUIREMENTS.

NOTE:

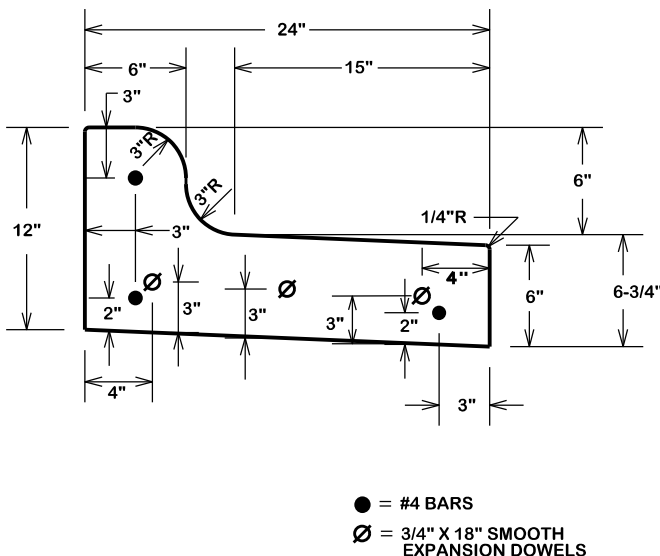
TYPE "G" EXPANSION JOINTS IN CURB & GUTTER SHALL BE SPACED AT A MAXIMUM DISTANCE OF 40' APART AND AT ALL RADIUS POINTS, P.T.'S, AND P.C.'S. TYPE "B" CONTRACTION JOINTS IN CURB & GUTTER SHALL BE SPACED AT A MAXIMUM DISTANCE OF 10' APART



28-DAY CONCRETE
STRENGTH=3500 psi.

TYPICAL
RIBBON CURB

ST1-03

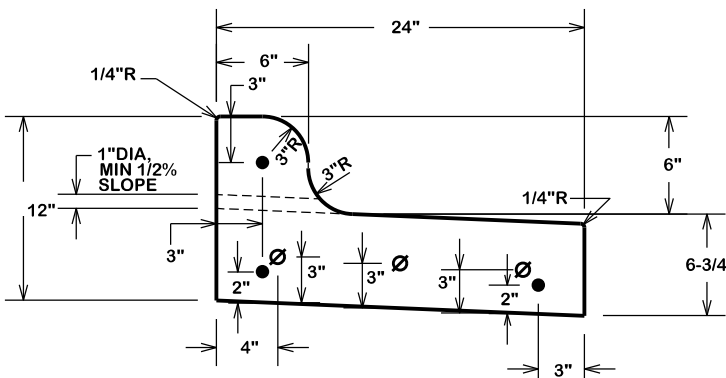


TYPICAL COMBINED
SPILL CURB

ST1-04

NOTE:

- TYPE "G" EXPANSION JOINTS IN CURB & GUTTER SHALL BE SPACED AT A MAXIMUM DISTANCE OF 40' APART AND AT ALL RADIUS POINTS, P.T.'S, AND P.C.'S. TYPE "B" CONTRACTION JOINTS IN CURB & GUTTER SHALL BE SPACED AT A MAXIMUM DISTANCE OF 10' APART
- PIPE EXTENDED 1'-2" FROM BOC TO BE COVERED WITH FABRIC AND TIED IN PLACE



● = #4 BARS
Ø = 3/4" X 18" SMOOTH
EXPANSION DOWELS

TYPICAL WEEPHOLE CURB

ST1-05

REVISIONS:
10/20/2016 - Detail ST1-00 has been revised and approved for use by CDB and COCS

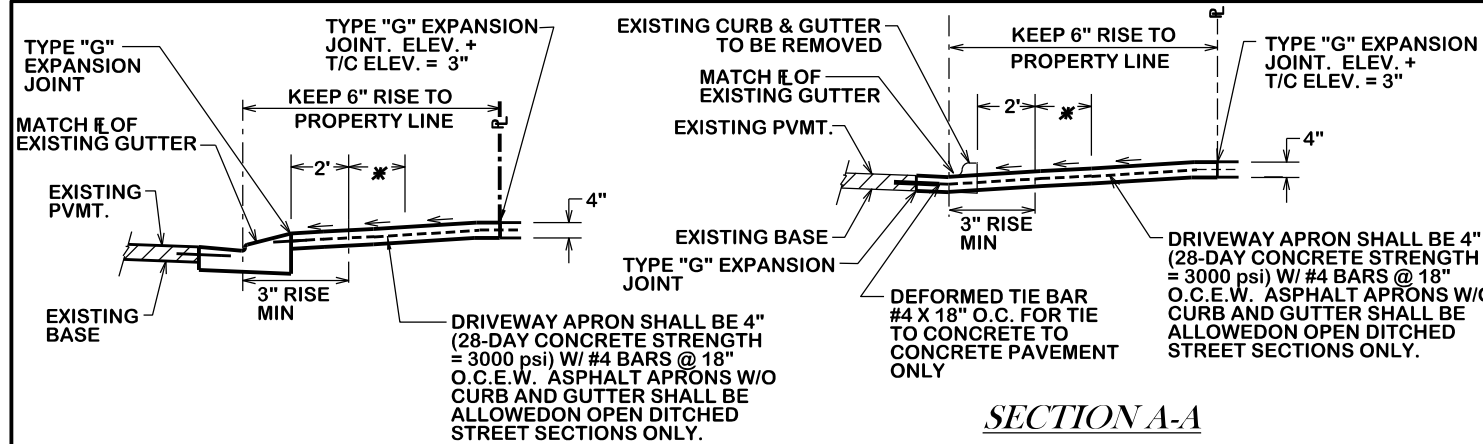
BRYAN - COLLEGE STATION
STANDARD STREET DETAILS



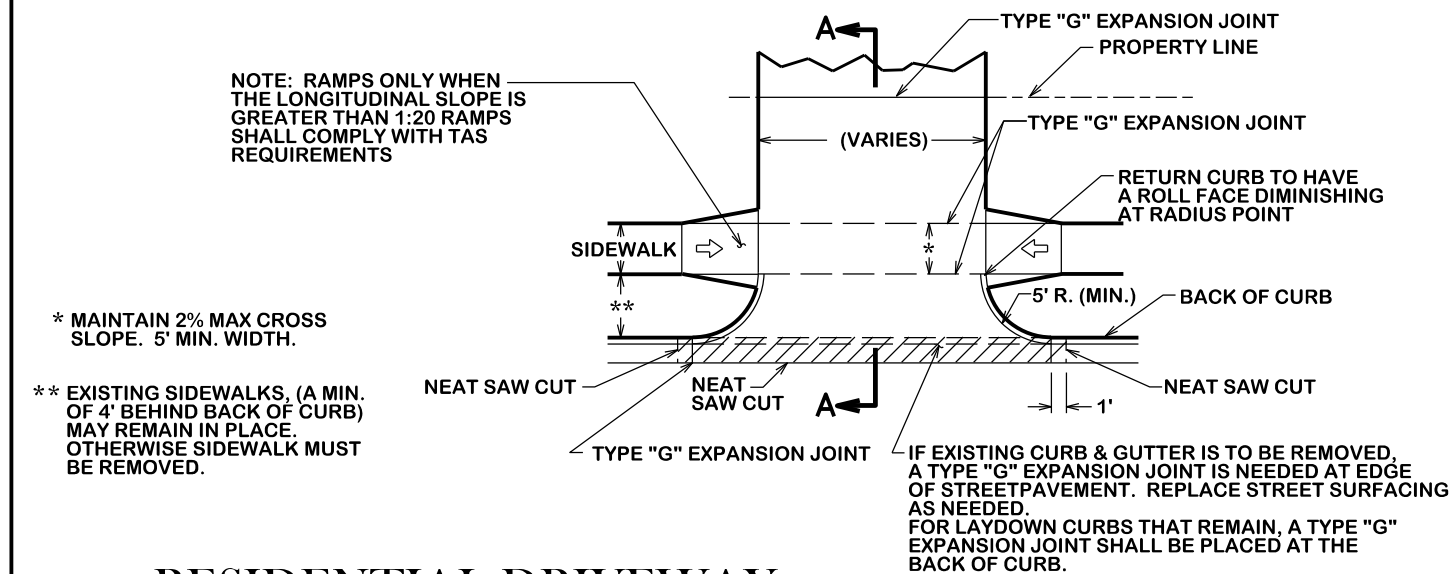
DRAWN BY: C.L.M.
DATE: 08-01-12
SCALE: N T S
APPROVED: W.P.K.

FIGURE:

ST1
SHEET 1 OF 4

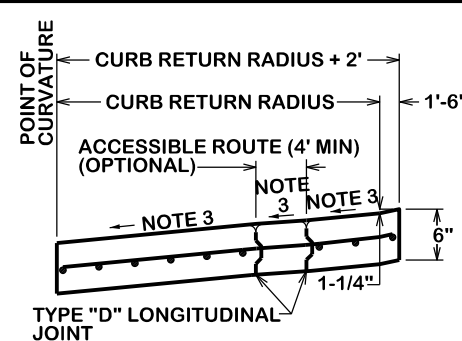


SECTION A-A
WITH LAYDOWN CURB



RESIDENTIAL DRIVEWAY

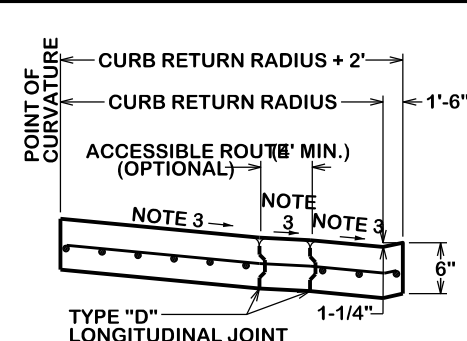
ST2-00



SECTION A-A

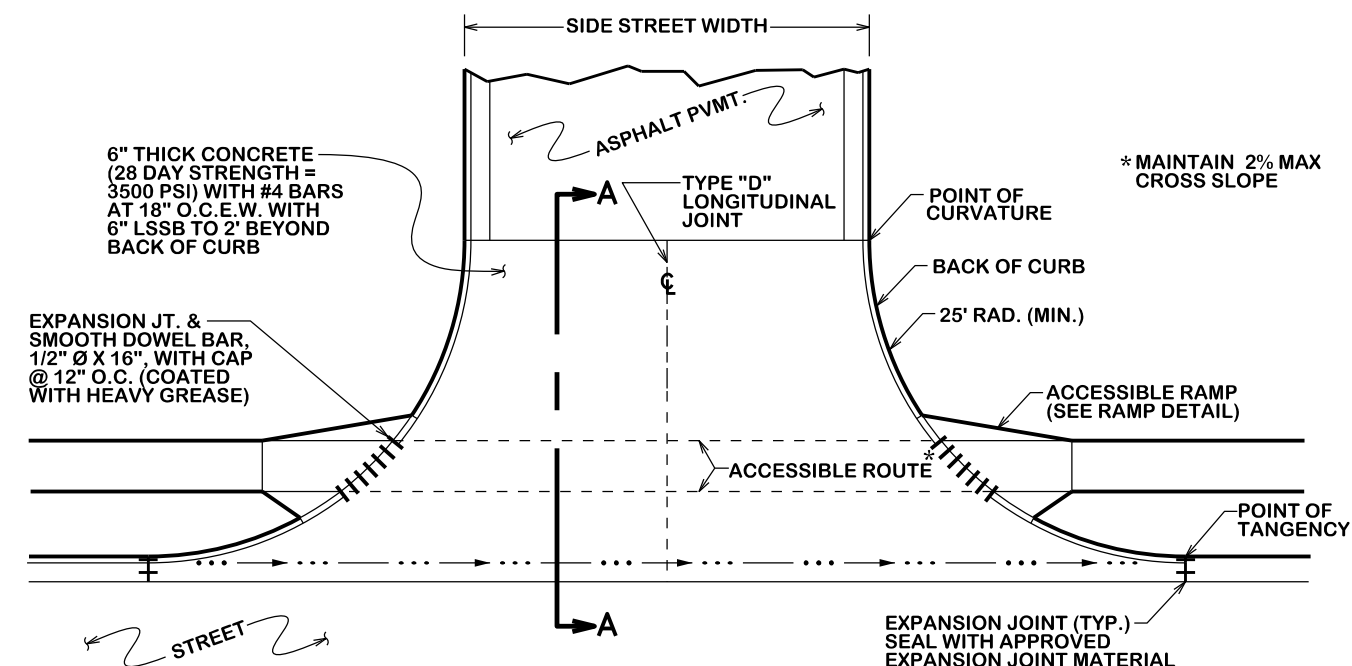
SLOPING AWAY FROM INTERSECTION

- NOTES:**
1. IF THERE IS A VALLEY GUTTER, THEN TRANSITION CROWN AT VALLEY GUTTER TO FULL CROWN IN 50'.
 2. TYPE "G" EXPANSION JOINTS IN CURB & GUTTER SHALL BE SPACED AT A MAX. DISTANCE OF 40' APART AND AT ALL RADIUS POINTS, P.T.'S & P.C.'S. TYPE "B" CONTRACTION JOINTS IN CURB & GUTTER SHALL BE SPACED AT A MAX. DISTANCE OF 10' APART.
 3. 2% MAX SLOPE.
 4. 5' MIN TRANSITION TO LAY DOWN CURB BEGIN AT P.T.



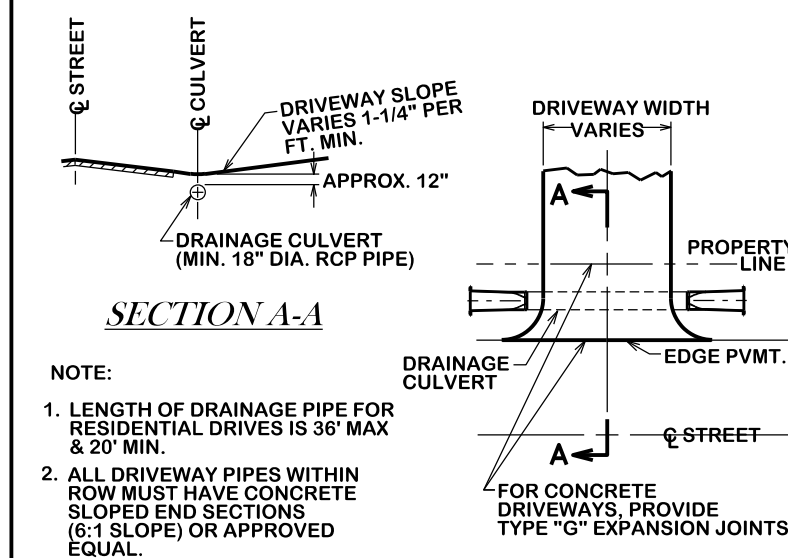
SECTION A-A

SLOPING TOWARD INTERSECTION



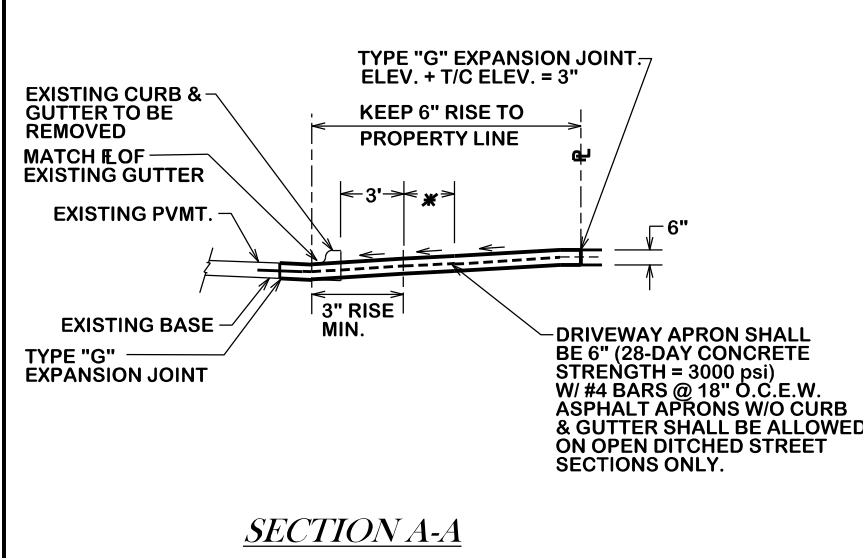
TYPICAL STREET CONCRETE APRON

ST2-01



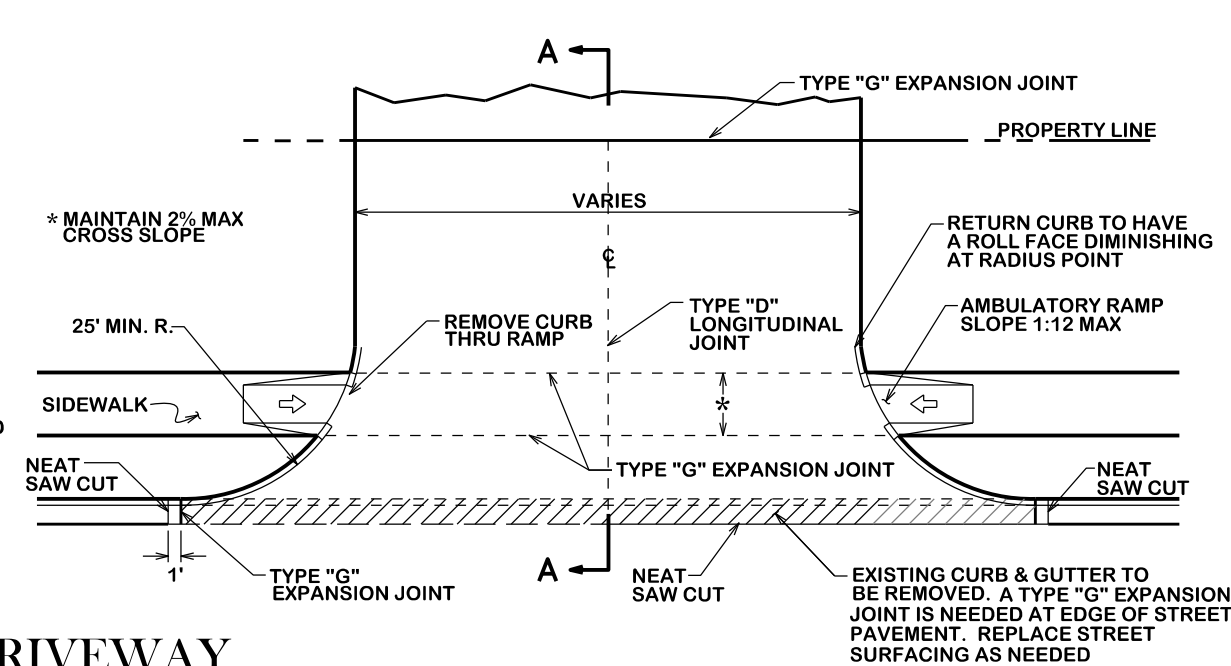
TYPICAL DRIVEWAY ENTRANCE WITH CULVERT

ST2-02



SECTION A-A

COMMERCIAL DRIVEWAY



ST2-03

REVISIONS:

10/20/2016 - Details ST2-00 and ST2-03 have been revised and accepted for use by COB and COCS

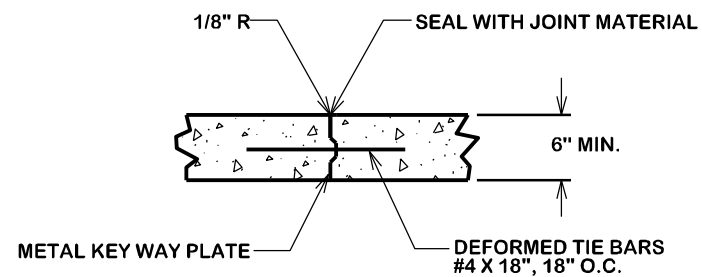
10/20/2016 - Details ST2-00, ST2-02, and ST2-03 have been revised and accepted for use by COB and COCS

BRYAN - COLLEGE STATION
STANDARD STREET DETAILS



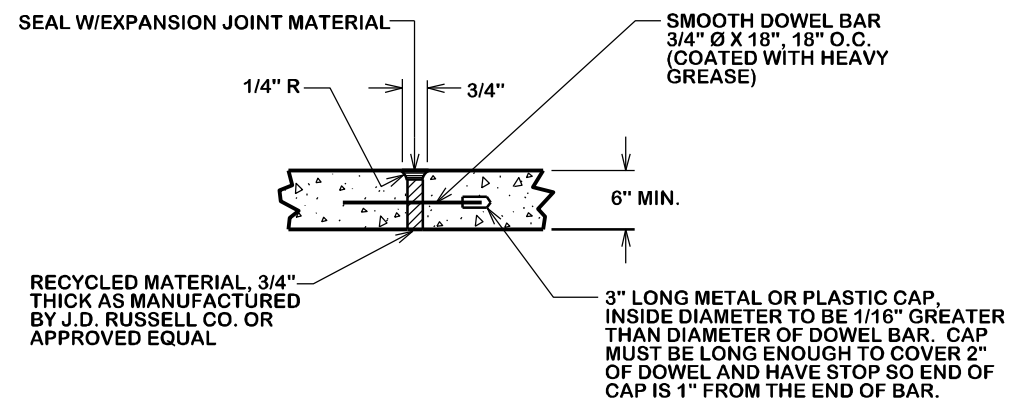
DRAWN BY: C.L.M.
DATE: 08-01-12
SCALE: N.T.S.
APPROVED: W.P.K.

FIGURE:
ST2
SHEET 2 OF 4

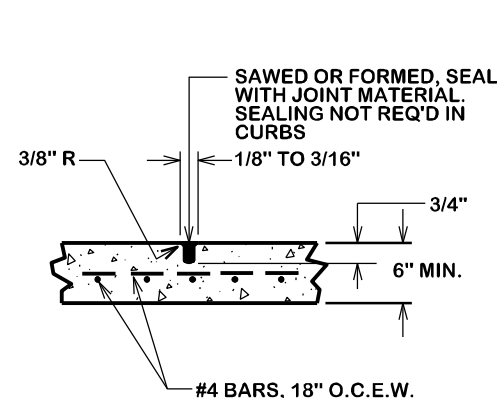


TYPE "D" LONGITUDINAL JOINT

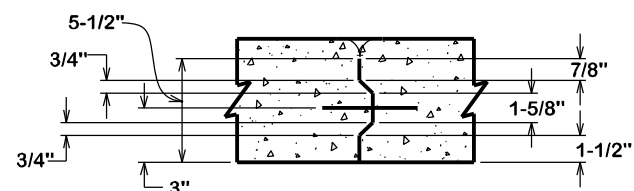
LONGITUDINAL JOINTS SHALL BE REQUIRED ONLY ON THE CENTERLINE OF THE PAVEMENT & IN INTERSECTIONS AS DETAILED



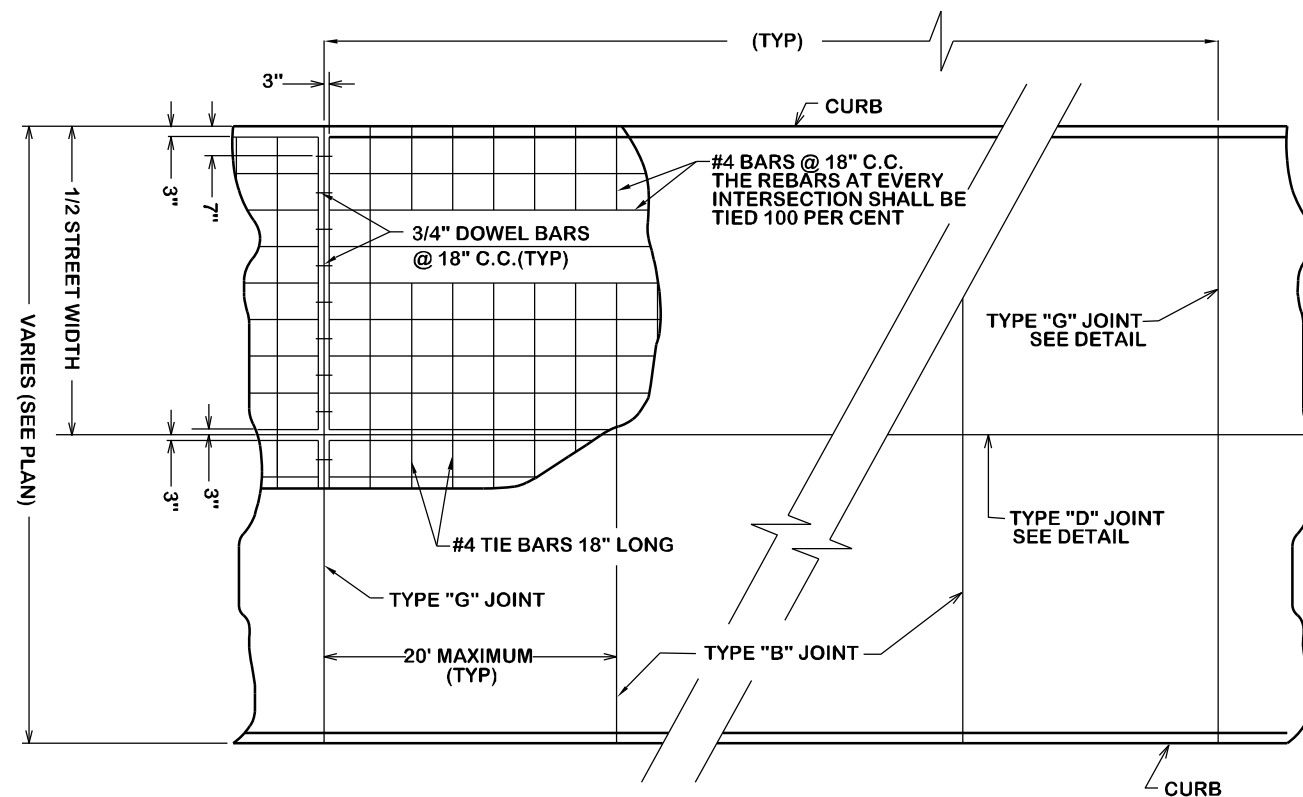
TYPE "G" EXPANSION & CONSTRUCTION JOINT



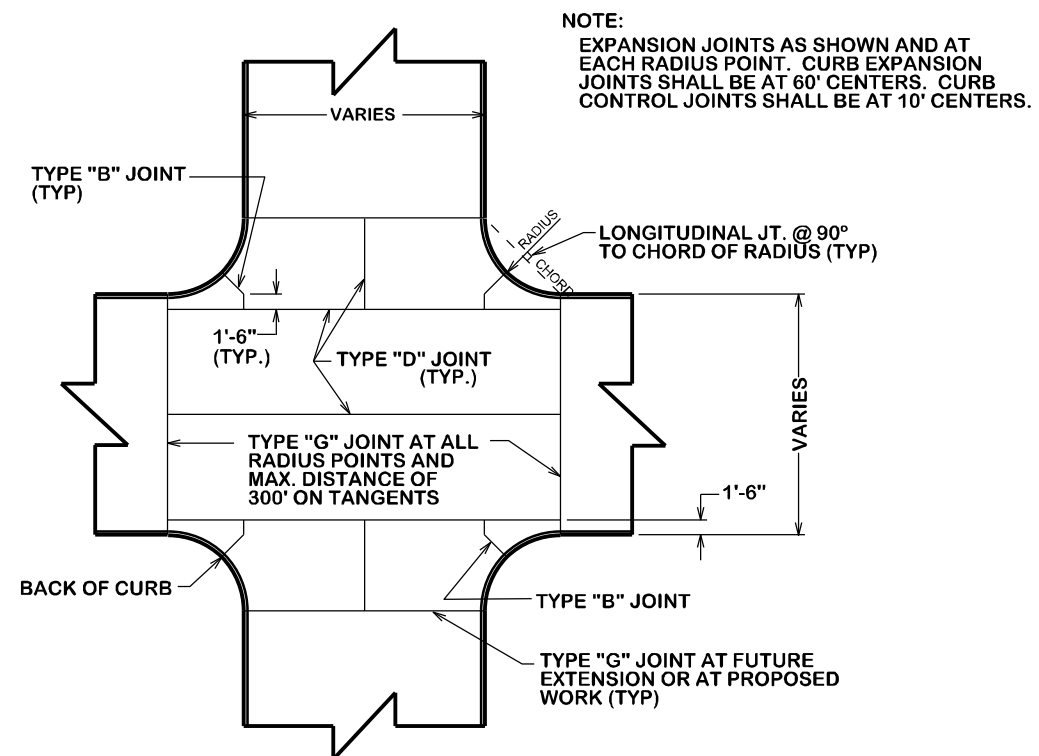
TYPE "B" CONTRACTION JOINT



METAL KEY WAY PLATE



TYPICAL JOINT & REINFORCEMENT LAYOUT FOR CONCRETE PAVEMENT



TYPICAL JOINT LAYOUT AT CONCRETE INTERSECTION

ST3-00

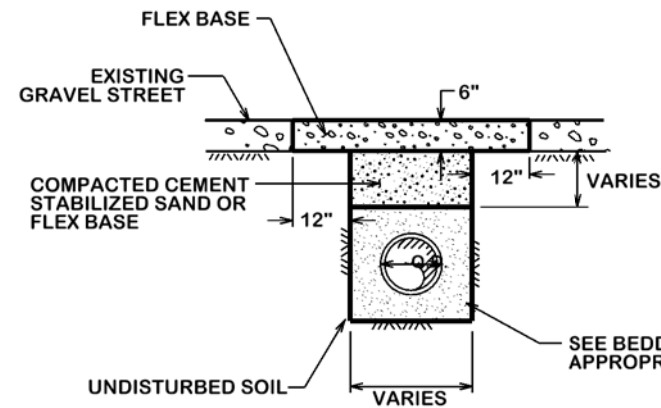
REVISIONS

BRYAN - COLLEGE STATION
STANDARD STREET DETAILS



DRAWN BY: C.L.M.
DATE: 08-01-12
SCALE: N T S
APPROVED: W.P.K.

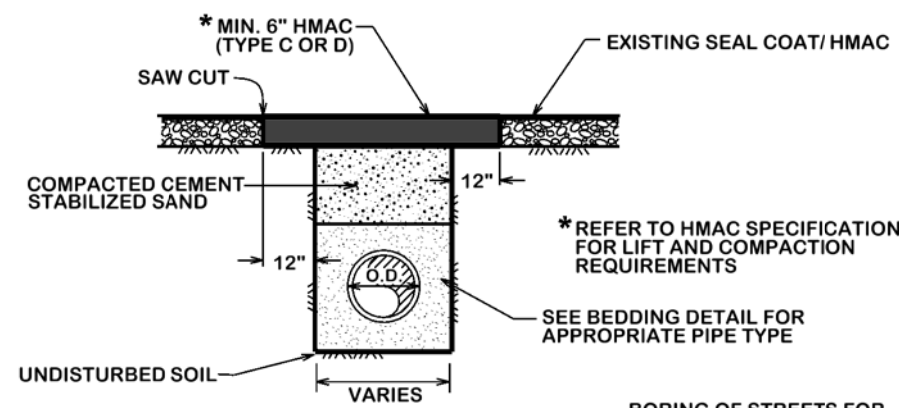
FIGURE:
ST3
SHEET 3 OF 4



**OPEN CUT
GRAVEL STREET**

ST4-00

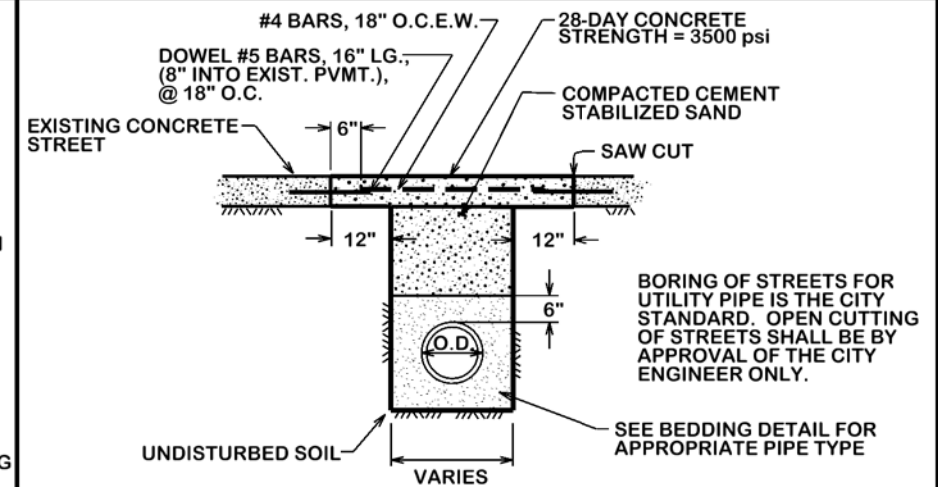
BORING OF STREETS FOR UTILITY PIPE IS THE CITY STANDARD. OPEN CUTTING OF STREETS SHALL BE BY APPROVAL OF THE CITY ENGINEER ONLY.



**OPEN CUT SEAL COAT/
OVERLAY STREET**

ST4-01

BORING OF STREETS FOR UTILITY PIPE IS THE CITY STANDARD. OPEN CUTTING OF STREETS SHALL BE BY APPROVAL OF THE CITY ENGINEER ONLY.



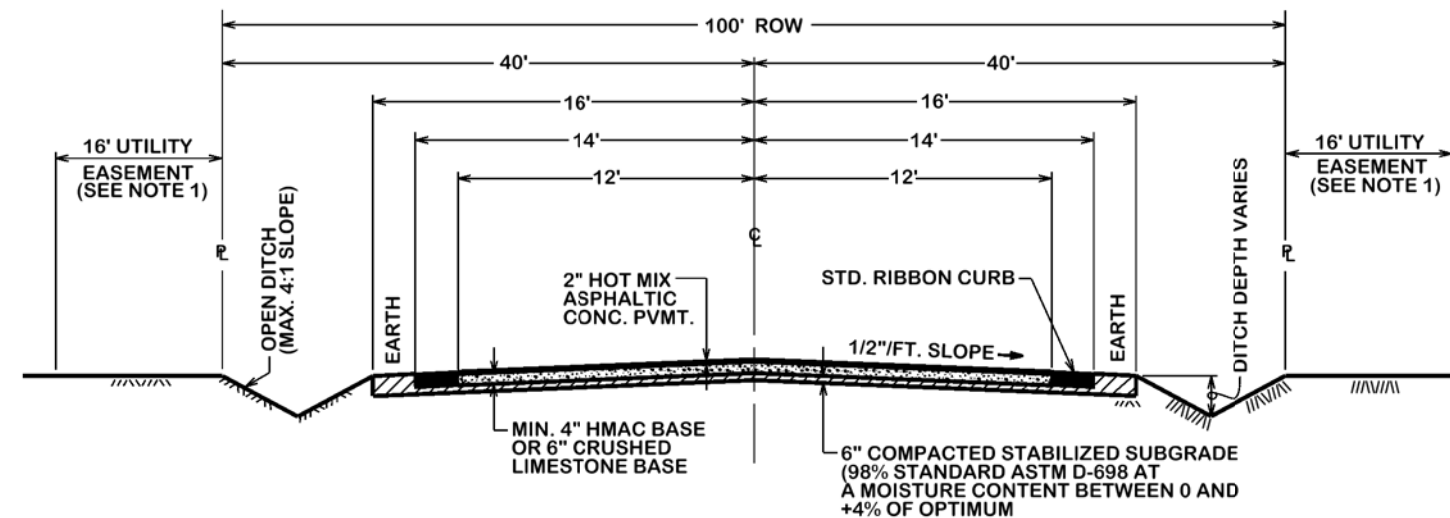
OPEN CUT CONCRETE STREET

ST4-02

	RESIDENTIAL SECTION	COLLECTOR SECTION
PAVEMENT WIDTH	24	30
R.O.W WIDTH	70	100

NOTES:

1. RURAL SECTIONS WILL NOT REQUIRE 16' EASEMENTS PARALLEL TO ROW WITHIN CITY LIMITS.
2. WITHIN ETJ AREA, RURAL SECTIONS SHALL FOLLOW COUNTY SPECS AND STANDARDS

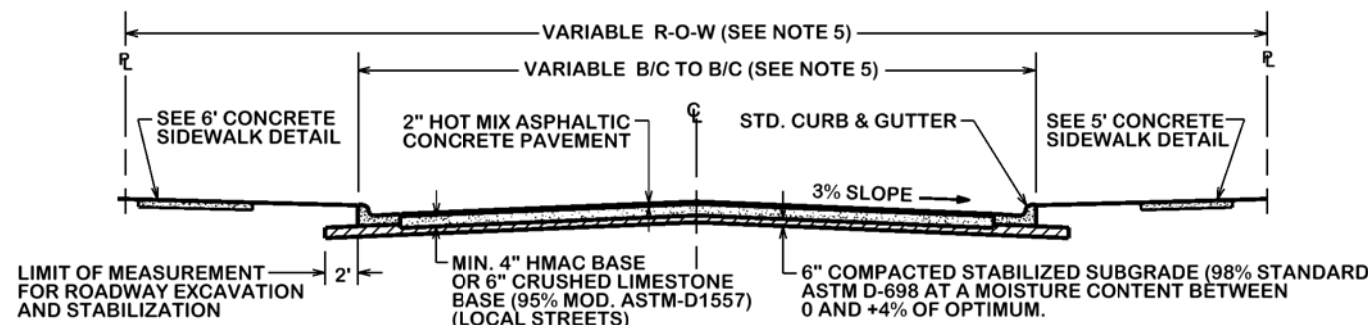


TYPICAL RURAL ROAD RIBBON CURB SECTION

ST4-03

NOTES:

1. ALL SUBGRADES SHALL BE STABILIZED.
2. FOR SUBGRADES WITH PI > 15 AND % PASSING THE #200 SIEVE ≥ 35%, USE LIME STABILIZATION.
3. FOR SUBGRADES WITH PI < 15 AND % PASSING THE #200 SIEVE < 35%, USE PORTLAND CEMENT STABILIZATION.
4. SIDEWALK PLACEMENT VARIES WITH EACH LOCATION AND WILL BE DETERMINED BY THE ENGINEER.
5. REFER TO B/C'S UNIFIED DESIGN GUIDELINE MANUAL FOR ACCEPTED RIGHT OF WAY AND PAVEMENT WIDTH.
6. COLLECTOR STREETS WILL BE REQUIRED TO USE 5" HMAC BASE OR 8" CRUSHED LIMESTONE BASE AND STABILIZED SUBGRADE IN ACCORDANCE WITH THE B/C'S UNIFIED DESIGN GUIDELINE MANUAL OR AS DIRECTED BY CITY ENGINEER.



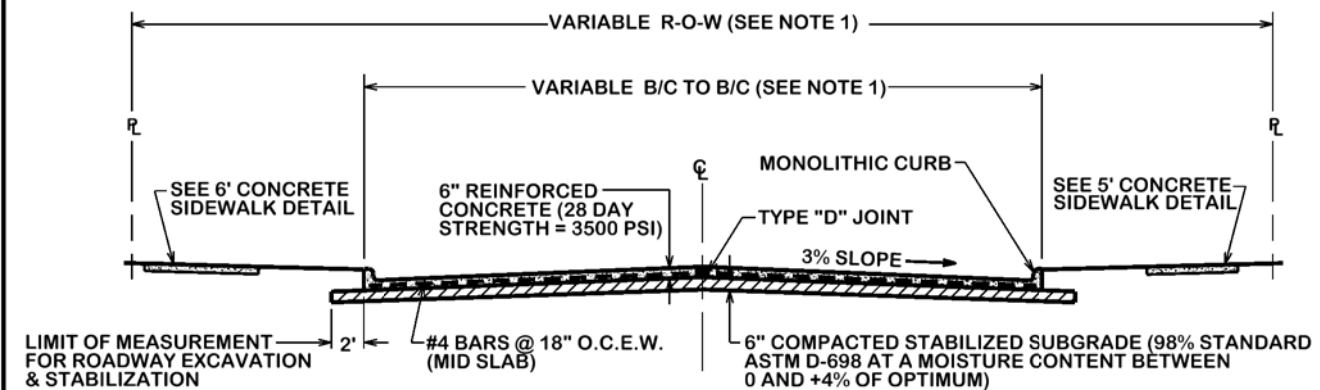
TYPICAL STREET SECTION

ASPHALTIC CONCRETE PAVEMENT

ST4-04

NOTES:

1. REFER TO B/C'S UNIFIED DESIGN GUIDELINE MANUAL FOR ACCEPTED RIGHT OF WAY AND PAVEMENT WIDTH.
2. COLLECTOR STREETS WILL BE REQUIRED TO USE 8" REINFORCED CONCRETE (28 DAY STRENGTH = 3500 PSI)



TYPICAL STREET SECTION

REINFORCED CONCRETE PAVEMENT

ST4-05

BRYAN - COLLEGE STATION
STANDARD STREET DETAILS



CITY OF BRYAN
The Good Life, Texas Style

DRAWN BY: C.L.M.
DATE: 08-01-12
SCALE: N T S
APPROVED: W.P.K.

FIGURE:
ST 4
SHEET 4 OF 4