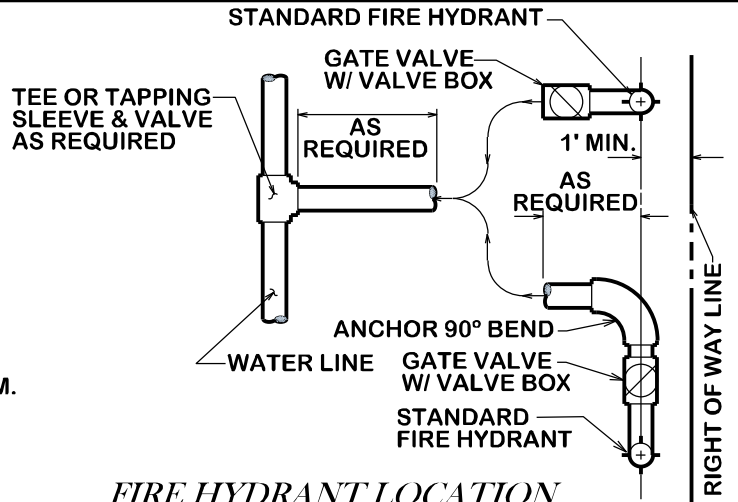
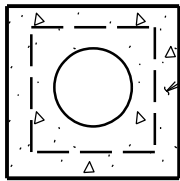
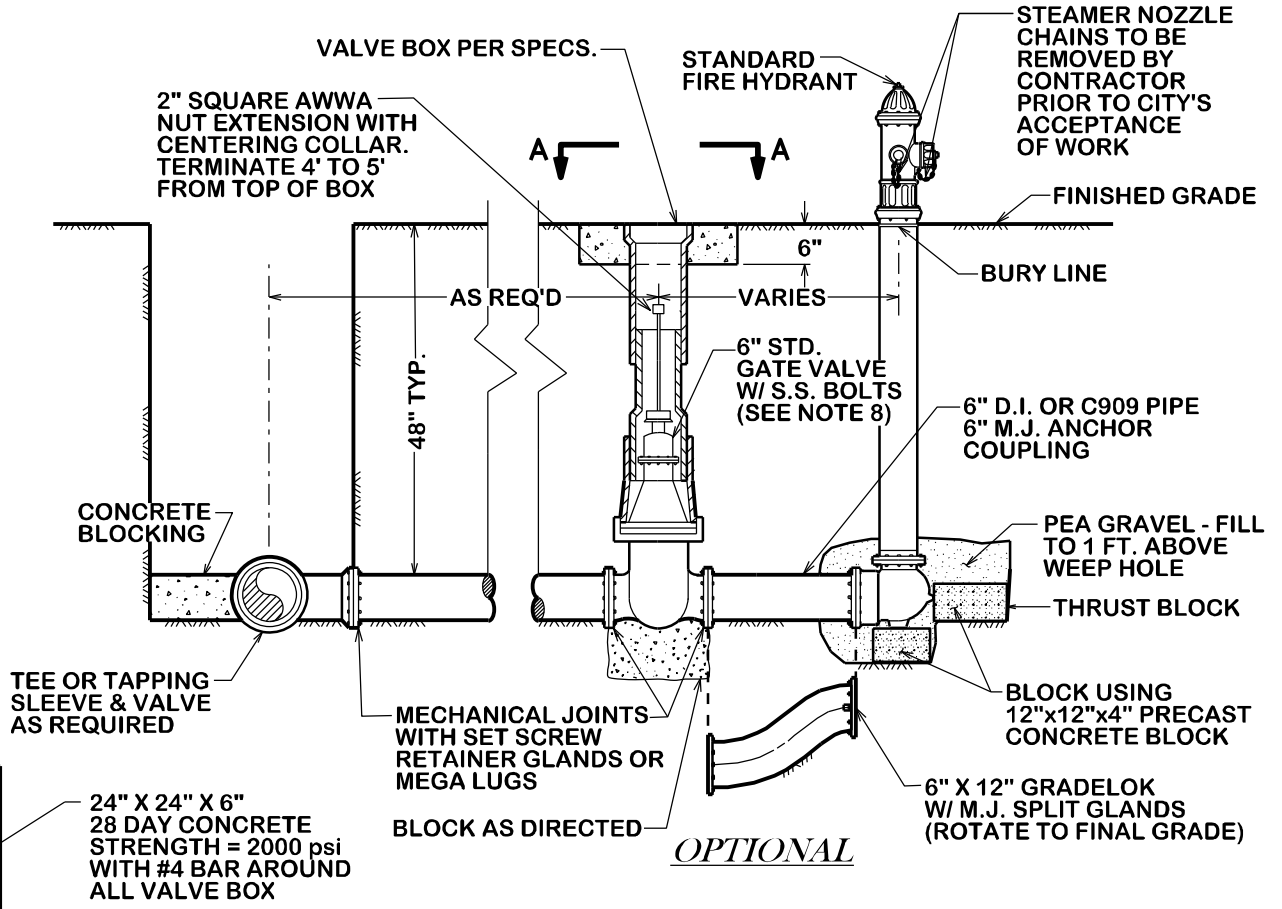


**GENERAL NOTES:**



1. FINLEY DIVIDED EARTH FREE OF ROCK, LUMPS AND CLODS EXCEEDING 6" SHALL BE PLACE BY HAND, AND COMPACTED AROUND THE CAST IRON PIPE TO A DEPTH OF 12" OVER THE TOP OF THE PIPE BEFORE BACKFILL IS BEGUN BY ANY MECHANICAL EQUIPMENT.
2. ALL CONCRETE BLOCKING SHALL BE 28 DAY STRENGTH = 2000 psi.
3. ALL THRUST BLOCKING SHALL PROVIDE A MINIMUM OF 2 SQUARE FEET OF BEARING AREA OF CONCRETE ON UNDISTURBED SOIL, OR AS DIRECTED BY THE ENGINEER.
4. WATER MAINS WILL NOT BE FULLY PRESSURIZED UNTIL CONCRETE HAS REACHED 7 DAY STRENGTH.
5. ALL PIPE WILL BE LAID SO AS THE ENTIRE BARREL WILL HAVE FULL BEARING ON THE FINE GRADED TRENCH BOTTOM. BELL HOLES SHALL BE CUT FOR EACH BELL AND FIRE HYDRANT.
6. ALL FITTINGS SHALL BE MECHANICAL JOINTS UNLESS OTHERWISE DIRECTED.
7. HYDRANTS SHALL BE LOCATED NO CLOSER THAN 3 FEET MEASURED FROM THE BACK OF CURB TO THE FACE OF THE STEAMER ON THE FIRE HYDRANT.
8. IF MAIN VALVE IS WITHIN 50 FEET OF FIRE HYDRANT THEN ASSEMBLY VALVE MAY BE OMITTED ON A DEAD END HYDRANT LEAD WITH NO ADDITIONAL CONNECTIONS.
9. HEIGHT OF FIRE HYDRANT MEASURED FROM THE STEAMER NOZZLE SHALL BE 18 TO 24 INCHES ABOVE NEAREST FINAL GRADE.



***FIRE HYDRANT LOCATION***  
***REALIGN AS NEEDED***



***VIEW A - A***

 CITY OF BRYAN <i>The Good Life, Texas Style</i>	<h2>STANDARD FIRE HYDRANT ASSEMBLY</h2>		 CITY OF COLLEGE STATION
	DATE <b>AUG. 2012</b>	B/CS UNIFIED <b>STANDARD DETAIL</b>	