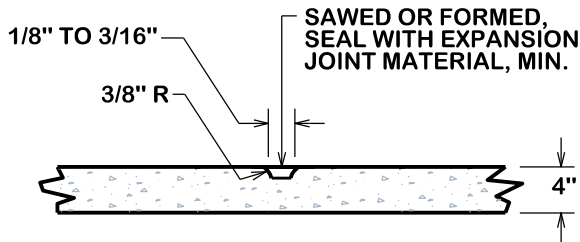


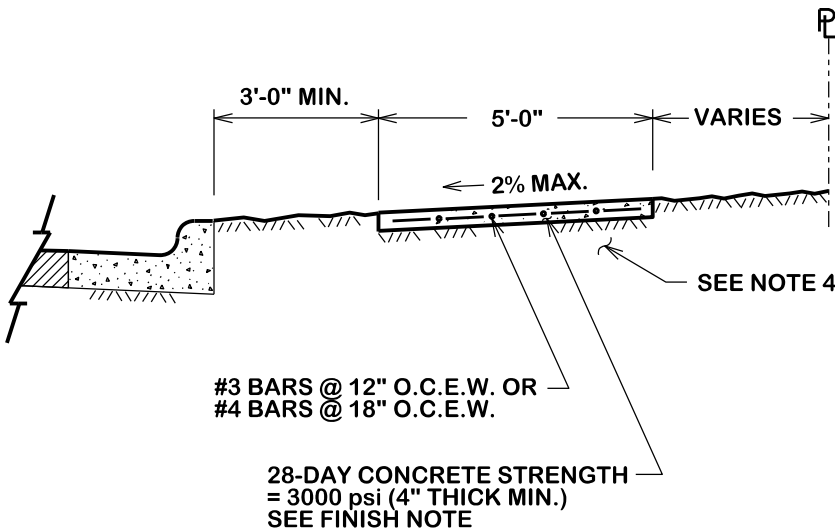
TYPE "G" SIDEWALK EXPANSION & CONSTRUCTION JOINT



SIDEWALK CONTRACTION JOINT

NOTES:

1. SIDEWALK PLACEMENT SHALL BE IN ACCORDANCE WITH B/CS UNIFIED DESIGN GUIDELINES.
2. FINISH: LIGHT BROOM FINISH. JOINTS TO BE TOOLED 1" DEEP AT AN INTERVAL EQUAL TO THE SIDEWALK WIDTH. EXPANSION JOINTS @ 40' O.C., CONTRACTION JOINTS @ 4' O.C.
3. DOWEL IN AND TIE TO ANY CONCRETE STRUCTURE ADJACENT TO SIDEWALK (DRIVEWAY, INLET BOX, CURB, JUNCTION BOX, ETC.) WITH #3 x 12" BARS @ 12" O.C. OR #4 x 12" BARS @ 18" O.C. DOWEL IN CURB SHALL MAINTAIN MIN. 2" COVER FROM THE TOP OF CURB AND SHALL EXTEND INTO CURB A MIN. OF 2.5" AND A MAX. OF 3.5". INCLUDE TYPE "G" EXPANSION JOINT AT CONNECTION WITH BACK OF CURB.
4. COMPACTION: COMPACTED SUBGRADE MATERIAL COMPACTED TO A DENSITY AT LEAST 98% OF MAXIMUM DRY DENSITY AS DETERMINED BY PROCTOR COMPACTION TEST ASTM D698 (STANDARD) AND SHALL BE 0-4% WET OF THE OPTIMUM MOISTURE CONTENT
5. A MINIMUM CLEAR PEDESTRIAN WIDTH AS DEFINED BY TAS AND ADA SHALL BE PROVIDED FOR ENTIRE LENGTH OF SIDEWALK.
6. ALL SIDEWALKS, INCLUDING PRIVATELY-OWNED, PERPENDICULAR TO STREET SHALL HAVE TYPE "G" EXPANSION JOINT AT CONNECTIONS WITH BACK OF CURB, BOTH SIDES OF LONGITUDINAL SIDEWALK, AND AT PROPERTY LINE.



ALONG LOCAL STREETS



CITY OF BRYAN
The Good Life, Texas Style.

5' CONCRETE SIDEWALK

DATE

OCT. 2016

**B/CS UNIFIED
STANDARD DETAIL**

DETAIL NO.

SW1-02A



CITY OF COLLEGE STATION