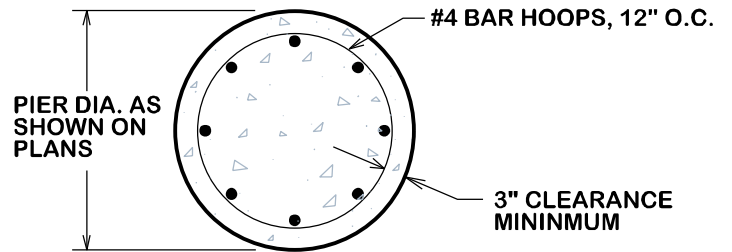
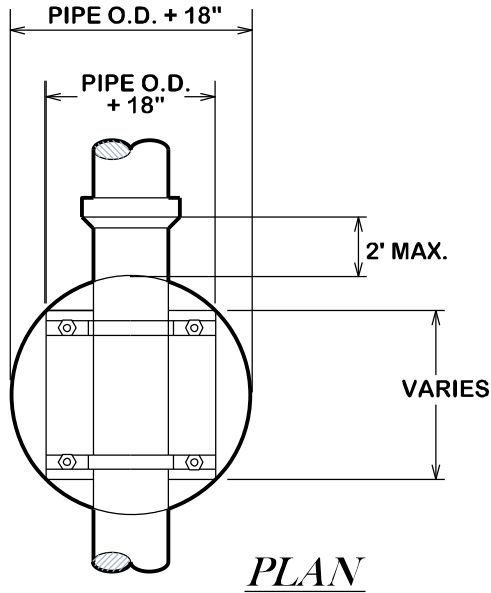


**NOTES:**

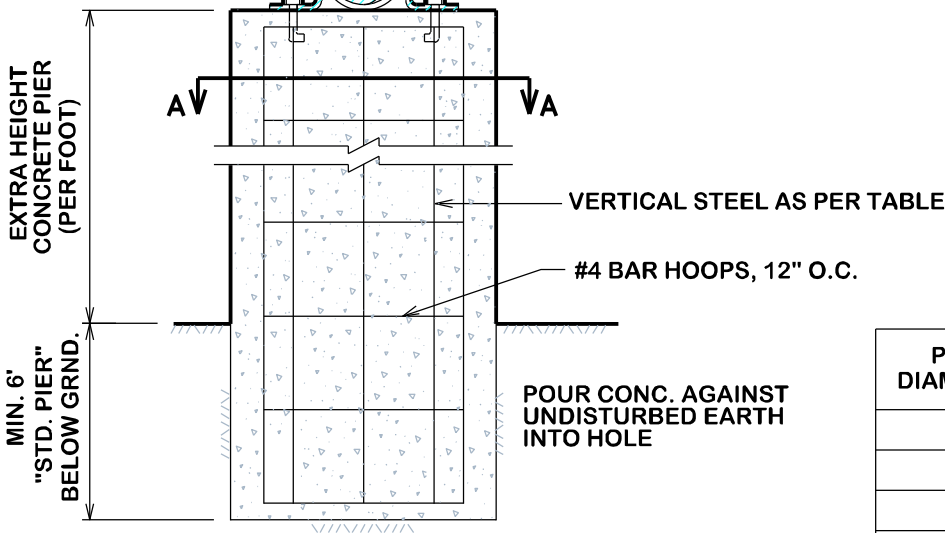
1. EACH PIER SHALL BE COMPLETED IN A SINGLE CONTINUOUS POUR.
2. CHAMFER EDGES 3/4".
3. CONTRACTOR SHALL CONSTRUCT CONCRETE PIER TO A MINIMUM DEPTH OF 6' OR TO A DEPTH WHERE A GOOD BEARING SOIL IS ENCOUNTERED.
4. ALL SHAFTS SHALL BE BORED VERTICALLY PLUMB WITHIN 2" TOLERANCE.
5. ALL INFORMATION SHOWN IS CITY MINIMUM. ALL PIERS SHALL BE DESIGNED BY A PROFESSIONAL ENGINEER.



4" WIDE X 3/8" THICK STAINLESS STEEL STRAP (PRIMED & PAINTED) FORMED TO PERMIT SNUG TIGHTENING OF PIPE TO PIER (2 REQ'D. PER PIER)

DUCTILE IRON PIPE WRAP WITH ONE LAYER OF TAR PAPER TO PREVENT BONDING

1" x 18" GALVANIZED STEEL ANCHOR BOLT SECURED TO VERTICAL REINFORCING STEEL



PIER DIAMETER	VERTICAL STEEL
	#5 BARS
16"	8
24"	12
26"	14
30"	16
42"	24



CITY OF BRYAN  
The Good Life, Texas Style.

# TYPICAL CONCRETE DRILLED PIER FOR AERIAL SEWER

DATE

**AUG. 2012**

**B/CS UNIFIED STANDARD DETAIL**

DETAIL NO.

**S4-00**



CITY OF COLLEGE STATION