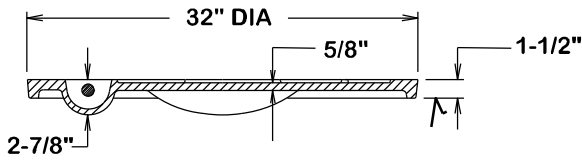
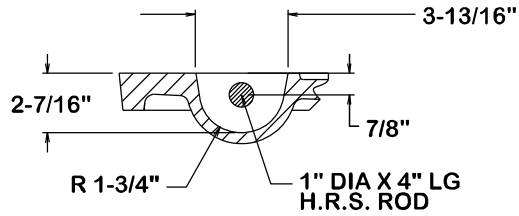


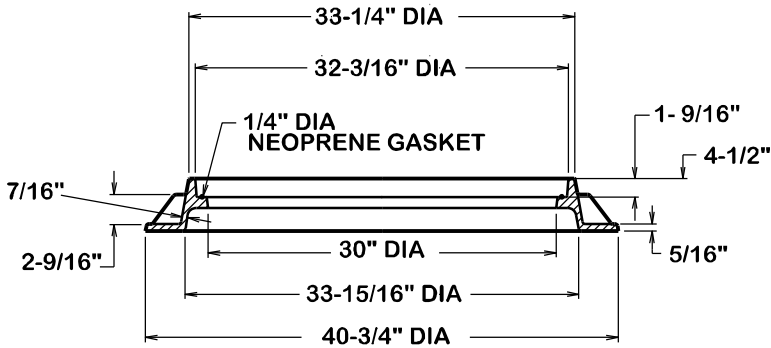
√ MACHINED SURFACE



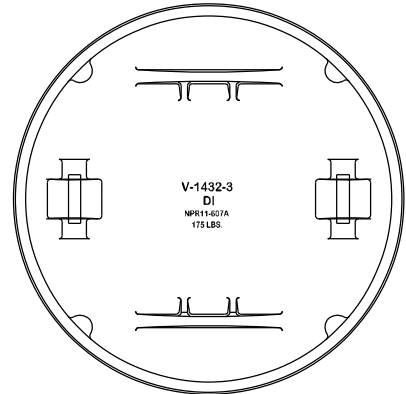
COVER SECTION



PICKBAR DETAIL

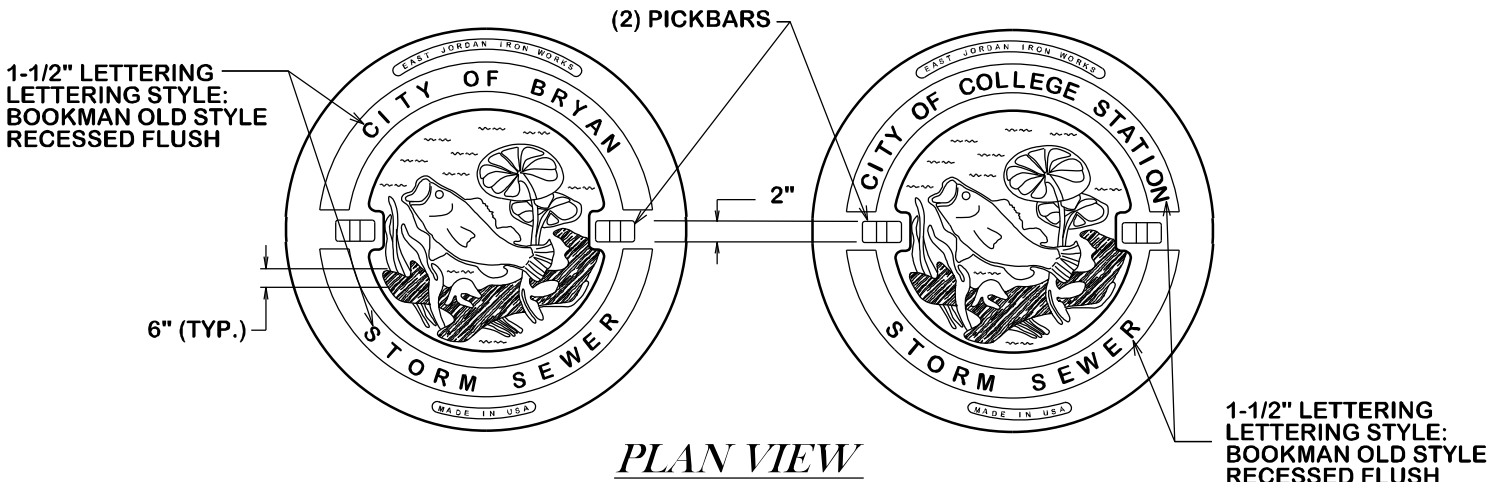


FRAME SECTION



BOTTOM VIEW  
OF COVER

**NOTE:**  
STORM SEWER LIDS TO BE  
USED FOR PUBLIC STORM  
SEWER SYSTEMS ONLY.  
NOT TO BE USED ON PRIVATE  
STORM SEWER SYSTEMS.



PLAN VIEW



CITY OF BRYAN  
The Good Life, Texas Style.

# STORM SEWER MANHOLE RING AND COVER 32" DIA. DUCTILE IRON V-1432-3

DATE

**AUG. 2012**

**B/CS UNIFIED  
STANDARD DETAIL**

DETAIL NO.

**D4-00**



CITY OF COLLEGE STATION